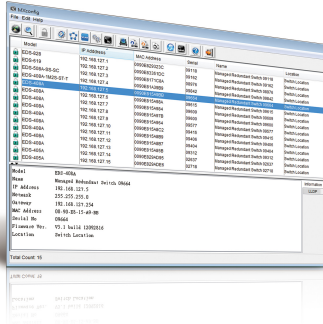


MXconfig Series

Industrial network configuration tool



Features and Benefits

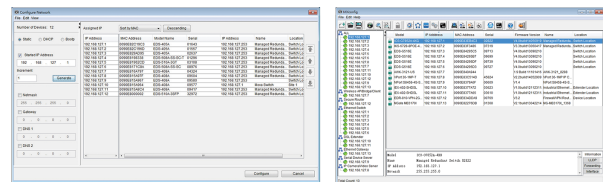
- Mass managed function configuration increases deployment efficiency and reduces setup time
- Mass configuration duplication reduces installation costs
- Link sequence detection eliminates manual setting errors
- Configuration overview and documentation for easy status review and management
- Three user privilege levels enhance security and management flexibility

Introduction

Moxa's MXconfig is a comprehensive Windows-based utility that is used to install, configure, and maintain multiple Moxa devices on industrial networks. This suite of useful tools helps users set the IP addresses of multiple devices with one click, configure the redundant protocols and VLAN settings, modify multiple network configurations of multiple Moxa devices, upload firmware to multiple devices, export or import configuration files, copy configuration settings across devices, easily link to web and Telnet consoles, and test device connectivity. MXconfig gives device installers and control engineers a powerful and easy way to mass configure devices, and it effectively reduces the setup and maintenance cost.

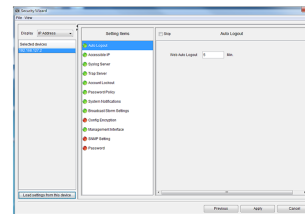
Device Discovery and Fast Group Configuration

- Easy broadcast search of the network for all supported Moxa managed Ethernet devices
- Mass network setting (such as IP addresses, gateway, and DNS) deployment reduces setup time
- Deployment of mass managed functions increases configuration efficiency
- Security wizard for convenient setup of security-related parameters
- Multiple grouping for easy classification
- User-friendly port selection panel provides physical port descriptions
- VLAN Quick-Add Panel speeds up setup time
- Deploy multiple devices with one click using CLI execution



Network Setting

Multiple Grouping



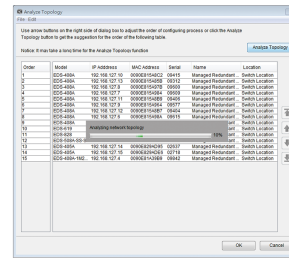
Security Wizard

Fast Configuration Deployment

- Quick configuration: copies a specific setting to multiple devices and changes IP addresses with one click

Link Sequence Detection

- Link sequence detection eliminates manual configuration errors and avoids disconnections, especially when configuring redundancy protocols or VLAN settings for a network in a daisy-chain topology (line topology).
- Link Sequence IP setting (LSIP) prioritizes devices and configures IP addresses by link sequence to enhance deployment efficiency, especially in a daisy-chain topology (line topology).



Analyze Topology

Unlock Devices and User Privileges

- Mass device unlocking and password file export for quick unlocks.
- Three user privilege levels to enhance management flexibility and security: Admin, Supervisor, and Operator.

Configuration Overview and Documentation

- Useful mass status overview and configuration check for each managed function.
- Generate reports on each managed function for multiple devices in the network.
- Export multiple configuration files with flexible filenames and import multiple configuration files to multiple devices.
- Export device list for easy backup, and import device list for quick searching.

Status Overview

	A	B	C	D	E	F	G	H	I	J	K	L	M
1	IP	Activated Protocol	Ring 1 Enable	Ring 1 Master	Ring 1 Port	Ring 1 Broken	Ring 2 Enable	Ring 2 Master	Ring 2 Port	Ring 2 Broken	Coupling Enable	Coupling Mode	Coupling Port
2	192.168.127.1	Turbo Ring V2	Enable	no	1 forwarding 2 forwarding	normal	Disable	no	1 notRedundant 1 notRedundant	N/A	Disable	Dual Homing	1 notRedundant 1 notRedundant
3	192.168.127.2	Turbo Ring V2	Enable	no	1 forwarding 2 forwarding	normal	Disable	no	1 notRedundant 1 notRedundant	N/A	Disable	Dual Homing	1 notRedundant 1 notRedundant
4	192.168.127.3	Turbo Ring V2	Enable	no	1 forwarding 2 forwarding	normal	Disable	no	1 notRedundant 1 notRedundant	N/A	Disable	Dual Homing	1 notRedundant 1 notRedundant
5	192.168.127.4	Turbo Ring V2	Enable	no	1 forwarding 2 forwarding	normal	Disable	no	1 notRedundant 1 notRedundant	N/A	Disable	Dual Homing	1 notRedundant 1 notRedundant
6	192.168.127.5	Turbo Ring V2	Enable	no	1 forwarding 2 forwarding	normal	Disable	no	1 notRedundant 1 notRedundant	N/A	Disable	Dual Homing	1 notRedundant 1 notRedundant
7	192.168.127.6	Turbo Ring V2	Enable	no	1 forwarding 2 forwarding	normal	Disable	no	1 notRedundant 1 notRedundant	N/A	Disable	Dual Homing	1 notRedundant 1 notRedundant
8	192.168.127.7	Turbo Ring V2	Enable	no	1 forwarding 2 forwarding	normal	Disable	no	1 notRedundant 1 notRedundant	N/A	Disable	Dual Homing	1 notRedundant 1 notRedundant
9	192.168.127.8	Turbo Ring V2	Enable	no	1 forwarding 2 forwarding	normal	Disable	no	1 notRedundant 1 notRedundant	N/A	Disable	Dual Homing	1 notRedundant 1 notRedundant
10	192.168.127.9	Turbo Ring V2	Enable	no	1 forwarding 2 forwarding	normal	Disable	no	1 notRedundant 1 notRedundant	N/A	Disable	Dual Homing	1 notRedundant 1 notRedundant
11	192.168.127.10	Turbo Ring V2	Enable	yes	1 forwarding 2 blocks	normal	Disable	no	1 notRedundant 1 notRedundant	N/A	Disable	Dual Homing	1 notRedundant 1 notRedundant
12													

File Export

Specifications

Hardware Requirements

RAM	2 GB
Hardware Disk Space	10 GB
OS	Windows 7 (32/64-bit), Windows 8 (32/64-bit), Windows 10 (32-64-bit), Windows Server 2012 (32/64-bit)
CPU	2 GHz or faster dual-core CPU

© Moxa Inc. All rights reserved. Updated Nov 12, 2018.

This document and any portion thereof may not be reproduced or used in any manner whatsoever without the express written permission of Moxa Inc. Product specifications subject to change without notice. Visit our website for the most up-to-date product information.