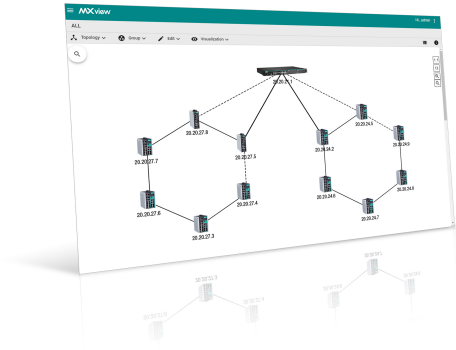


MXview Series

Industrial network management software designed for converged automation networks



Features and Benefits

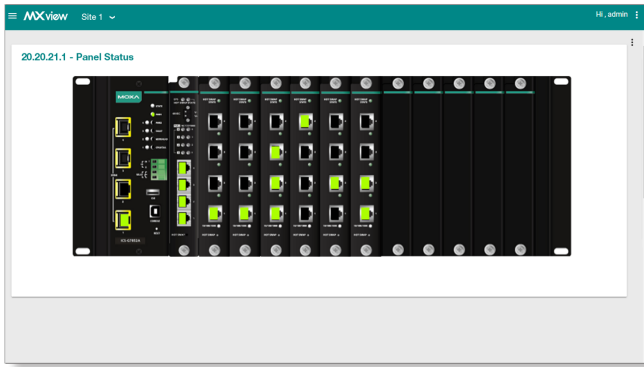
- Discovers and visualizes network devices and physical connections automatically
- Central management of configurations and firmware for Moxa devices
- Multiple options for events and notifications with self-defined threshold and duration
- Supports third-party devices with MIB compiler and MIB browser
- Comprehensive reports, including inventory, traffic, and availability reports
- Generates OPC 2.0 compliant tags automatically to integrate with SCADA/HMI applications
- Provides a virtual demonstration network that lets you experience the software without connecting any devices
- Supports MXview ToGo mobile app for remote monitoring and notifications—anytime, anywhere
- Provides RESTful API and web widget to embed MXview into industrial applications

Introduction

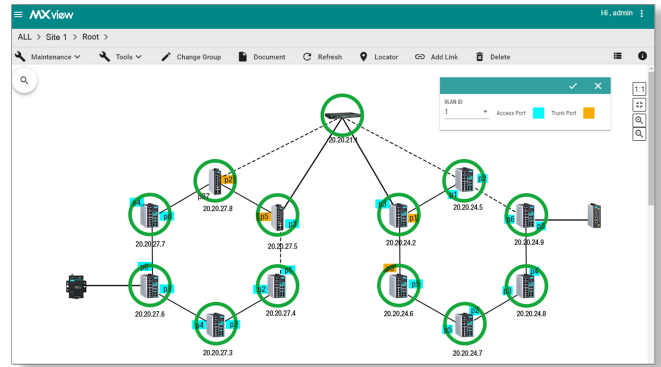
Moxa's MXview network management software is designed for configuring, monitoring, and diagnosing networking devices in industrial networks. MXview provides an integrated management platform that can discover networking devices and SNMP/IP devices installed on subnets. All selected network components can be managed via a web browser from both local and remote sites—anytime and anywhere.

Visualization

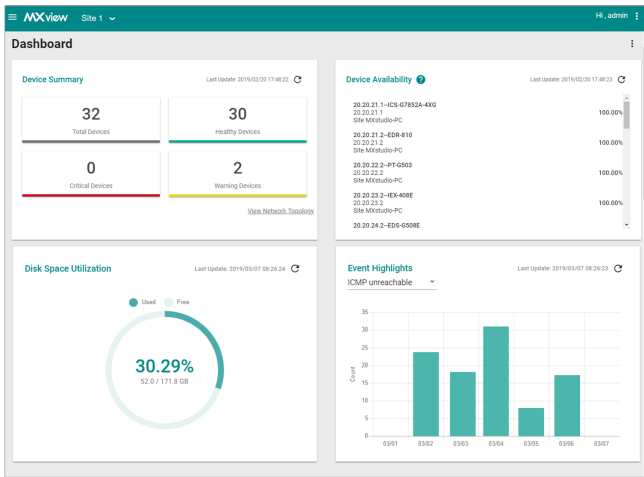
- Discovers up to 2,000 Moxa devices and SNMP/ICMP devices within scan range
- Visualization of redundant link status and device roles of network redundancy protocols
- Visualization of graphic VLAN groups
- Security view for the security status of network devices with industrial security standard
- Visualization of network traffic loading with color-coded links
- Device front panel visualization, including ports and LED indicators
- Visualization of managed PoE device power consumption
- Wireless dashboard shows relationship between wireless APs and Clients
- Displays third-party device icons
- A network management dashboard to view the network status quickly



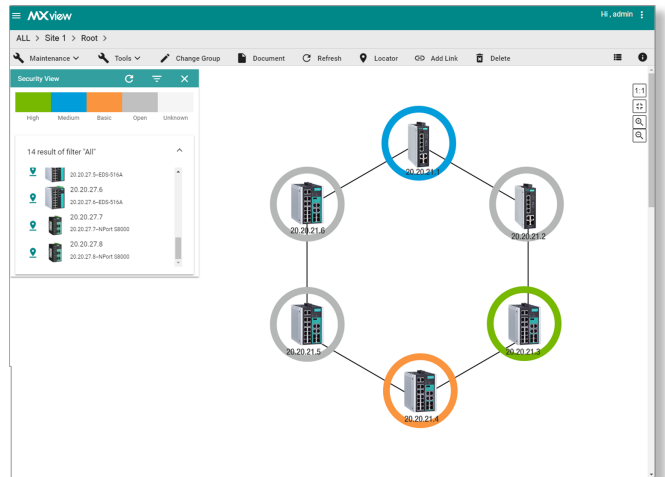
Virtual Device Panel



VLAN Visualization



Dashboard



Security View

Network Diagnostics and Event Notification

- Detect problems in real time with SNMP trap/inform, or periodic polling
- Generate trend graphs to track bandwidth utilization and error packet rate statistics, accurate to four decimal places
- Event Playback records network events and replays past network incidents
- Supports Syslog server for centralized message management
- Configurable event notification alarms sent through SMS, email, and SNMP trap, or locally through program notification, message box, and audio alerts

- Multiple options for events and notifications with self-defined threshold and duration
- Generate OPC 2.0 compliant tags automatically to integrate with SCADA/HMI applications
- Group health OPC tag represents entire network status
- Real-time device availability monitoring
- Supports third-party devices with MIB compiler and MIB browser
- Collaborate with third-party NMS through SNMP traps
- Provides RESTful API and web widget for integrating MXview into the existing system

Comprehensive Reports

- Maintain device availability reports and record for up to 90 days
- Generate an inventory report for each device on the network

- Compile comprehensive device properties report
- Generate network traffic trend reports

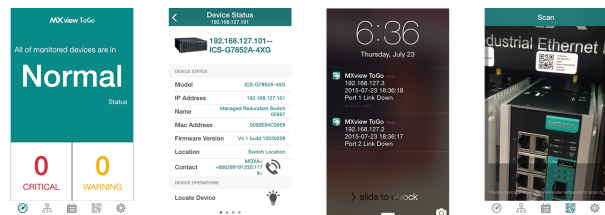
Centralized Configuration and Firmware Management

- Bulk deployment of device configurations and firmware
- In one click, back up the entire MXview database, including topology, job scheduling, events, and device properties

- Scheduling for periodic configuration backup
- Save history of configuration changes
- Comparison tool for checking differences between 2 configurations

Mobile App for Network Monitoring

- MXview ToGo mobile app for remote monitoring and notification—anytime, anywhere
- Smart Device Identification with QR Code enhances operational efficiency
- Device Locator with mobile app reduces searching time at field sites



Specifications

Hardware Requirements

CPU	2 GHz or faster dual-core CPU
RAM	8 GB
Hardware Disk Space	20 GB
OS	Windows 7 with Service Pack 1, Windows 10, Windows Server 2012 R2, Windows Server 2016

System Requirements

Supported Devices

	Supported Devices		
Series	Model Name	Firmware Ver.	
AWK Series	AWK-1121	V1.4	
	AWK-1127	V1.4	
	AWK-1131A	V1.11	
	AWK-1137C	V1.1	
	AWK-3121	V1.6	
	AWK-3131	V1.1	
	AWK-3131A	V1.3	
	AWK-4121	V1.6	
	AWK-4131	V1.1	
TAP Series	TAP-213	V1.2	
	WAC Series	WAC-1001	V2.1
		WAC-2004	V1.6
EDR Series	EDR-G903	V2.1	
	EDR-G902	V1.0	
	EDR-810	V3.2	
EDS Series	EDS-405A/408A	V2.6	
	EDS-405A/408A-EIP	V3.0	
	EDS-405A/408A-PN	V3.1	
	EDS-405A-PTP	V3.3	
	EDS-505A/508A/516A	V2.6	
	EDS-510A	V2.6	
	EDS-518A	V2.6	
	EDS-510E/518E	V4.0	
	EDS-528E	V5.0	
	EDS-G508E/G512E/G516E	V4.0	
	EDS-G512E-8PoE	V4.0	
	EDS-608/611/616/619	V1.1	
	EDS-728	V2.6	

	Supported Devices	
Series	Model Name	Firmware Ver.
	EDS-828	V2.6
	EDS-G509	V2.6
	EDS-P510	V2.6
	EDS-P510A-8PoE	V3.1
	EDS-P506A-4PoE	V2.6
	EDS-P506	V5.5
EOM Series	EOM-104/104-FO	V1.2
ICS Series	ICS-G7526/G7528	V1.0
	ICS-G7826/G7828	V1.1
	ICS-G7748/G7750/G7752	V1.2
	ICS-G7848/G7850/G7852	V1.2
	ICS-G7526A/G7528A	V4.0
	ICS-G7826A/G7828A	V4.0
	ICS-G7748A/G7750A/G7752A	V4.0
	ICS-G7848A/G7850A/G7852A	V4.0
IEX Series	IEX-402-SHDSL	V1.0
	IEX-402-VDSL2	V1.0
	IEX-408E-2VDSL2	V4.0
IKS Series	IKS-6726/6728	V2.6
	IKS-6524/6526	V2.6
	IKS-G6524	V1.0
	IKS-G6824	V1.1
	IKS-6728-8PoE	V3.1
	IKS-6726A/6728A	V4.0
	IKS-G6524A	V4.0
	IKS-G6824A	V4.0
	IKS-6728A-8PoE	V4.0
ioLogik Series	ioLogik E2210	V3.7
	ioLogik E2212	V3.7
	ioLogik E2214	V3.7
	ioLogik E2240	V3.7
	ioLogik E2242	V3.7
	ioLogik E2260	V3.7
	ioLogik E2262	V3.7
	ioLogik W5312	V1.7
	ioLogik W5340	V1.8
MGate Series	MGate MB3170	V1.0

	Supported Devices	
Series	Model Name	Firmware Ver.
	MGate MB3180	V1.0
	MGate MB3270	V1.0
	MGate MB3280	V1.0
	MGate MB3480	V1.0
	MGate MB3660	V1.0
	MGate EIP3170	V1.0
	MGate EIP3270	V1.0
	MGate 5101-PBM-MN	V1.1
	MGate 5102-PBM-PN	V1.1
	MGate 5105-MB-EIP	V1.0
	MGate 5109	V1.3
	MGate 5118	V1.0
	MGate W5108	V1.2
	MGate W5208	V1.2
	NPort Series	NPort S8455
NPort S8458		V1.3
NPort 5110		V2.4
NPort 5130/5150		V3.4
NPort 5210/5230/5232		V2.6
NPort 5410/5430/5450		V3.9
NPort 5600-8-DT/5650-8-DT		V2.2
NPort 5600		V3.5
NPort 5610-8-DTL/5650-8-DTL		V1.1
NPort 5110A/5130A/5150A		V1.1
NPort 5210A/5230A/5250A		V1.1
NPort IA5150/IA5250		V1.4
NPort IA5150A/IA5250A		V1.1
NPort IA5450A		V1.2
NPort 6150/6250/6450		V1.9
NPort 6610-8/6610-16/6610-32		V1.9
NPort 6650-8/6650-16/6650-32		V1.9
NPort 5150AI-M12		V1.0
NPort 5250AI-M12		V1.0
NPort 5450AI-M12		V1.0
PT Series	PT-7528	V3.0
	PT-7710	V1.2
	PT-7728	V2.6

	Supported Devices	
Series	Model Name	Firmware Ver.
	PT-7828	V2.6
	PT-G7509	V1.1
	PT-508/510	V3.0
	PT-G503-PHR-PTP	V4.0
	PT-G7728	V5.3
	PT-G7828	V5.3
TN Series	TN-5508/5510	V1.1
	TN-5516/5518	V1.2
	TN-5508-4PoE	V2.6
	TN-5516-8PoE	V2.6
VPort Series	VPort 26A-1MP	V1.2
	VPort 36-1MP	V1.1
	VPort P06-1MP-M12	V2.2

Note: MXview supports the listed or higher firmware versions.
Note: Additional model names will be added as MXview is updated. Check Moxa's website for the most up-to-date information.

Package Contents

Number of Supported Nodes	Up to 2000 (may require purchase of expansion licenses)
---------------------------	---

Ordering Information

Model Name	No. of Supported Nodes	License Expansion
MXview-50	50	-
MXview-100	100	-
MXview-250	250	-
MXview-500	500	-
MXview-1000	1000	-
MXview-2000	2000	-
MXview Upgrade-50	0	50 nodes

© Moxa Inc. All rights reserved. Updated Mar 22, 2019.

This document and any portion thereof may not be reproduced or used in any manner whatsoever without the express written permission of Moxa Inc. Product specifications subject to change without notice. Visit our website for the most up-to-date product information.