

# **MOXA Intellio Family Windows 2000 Driver Installation Guide**

# Contents

- 1. Introduction**
- 2. PCI board driver installation for Windows 2000**
- 3. ISA board driver installation under Windows 2000**
- 4. Changing the Multi-port board properties**
- 5. Check the Installation Result**
- 6. Uninstall**

## 1. Introduction

The Installation Guide provides the procedure about MOXA multi-port boards driver installation under Windows 2000 for all users.

The Windows 2000 driver for MOXA Intellio family multiport board supports following products.

- **PCI Boards : C218 Turbo/PCI, C320 Turbo/PCI, CP-204J**
- **ISA Boards : C218 Turbo, C320 Turbo**

For latest driver update, please refer to our web site at following addresses.

<http://www.moxa.com> or

<http://www.moxa.com.tw>

## 2. PCI Boards Driver Installation Procedure

This paragraph illustrates the driver installation for MOXA Intellio PCI boards under Windows 2000.

### Note:

- Please refer to User's Manual for hardware installation prior to install the board.
- Please make sure the C320Turbo/PCI board has connected with extension modules, CPU and UART modules, and must be installed ready before PC power on.
- The following illustration will be based on C320Turbo/PCI. The installation procedure for C218Turbo/PCI and CP-204J are same as that of C320Turbo/PCI.

### First Time Installation Procedure

1. PC power off.
2. Insert the PCI series of MOXA Intellio Family into the PC's PCI slot.
3. PC power on.
4. The Windows 2000 can auto-detect the newly added board and activate "Found New Hardware Wizard" for a suitable device driver via Plug & Play function.

Under the panel of "Found New Hardware Wizard", click [Next] to continue.

(As Figure.2-1 ~ Figure.2-2)



Figure.2-1



Figure.2-2

5. Choose "Search for a suitable driver..." and click [Next] (Figure.2-3)



Figure.2-3

6. Choose "Specify a location" and click [Next] to select device drive. (As Figure.2-4)

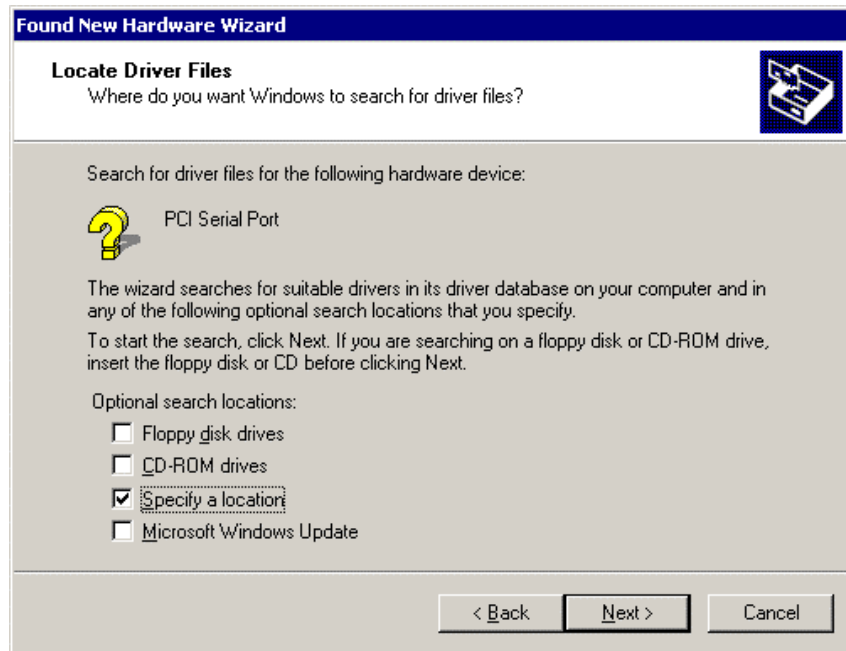


Figure.2-4

7. Insert the MOXA Driver CD-ROM. Specify driver location for the Wizard. Assume that the CD-ROM drive letter is "F:", enter the driver location in the windows. Then press [OK] to continue. (As Figure.2-5)

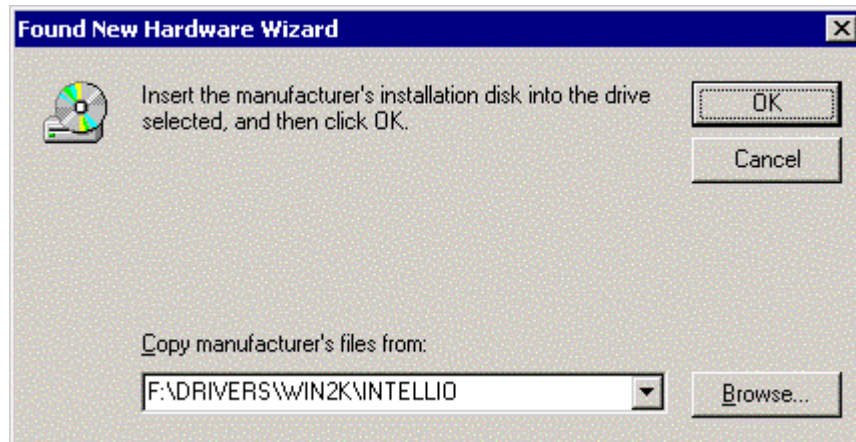


Figure.2-5

- The wizard starts to copy all necessary files and configure the Windows 2000 system. It may take for a while during system configuration. Then press “Next” to continue. When “Completing Found New Hardware” window appears, press “Finish” to go to next step.

(As Figure.2-6 ~ Figure.2-7)

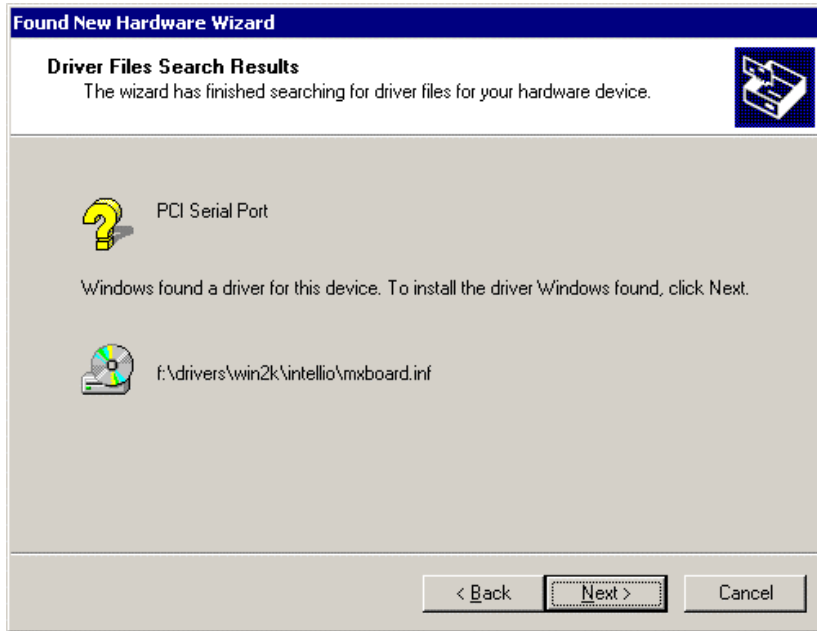


Figure.2-6



Figure.2-7

- Up to now, the board installation is finished. Next, Windows 2000 starts to install port devices. The “Found New Hardware” window appears again for port installation.

In “ Found New Hardware Wizard “, click [Next] to go on the port driver installation.

(As Figure.2-8~Figure.2-9)



Figure.2-8



Figure.2-9



10. Choose "Search for a suitable driver..." and click [Next] to continue. (As Figure.2-10)

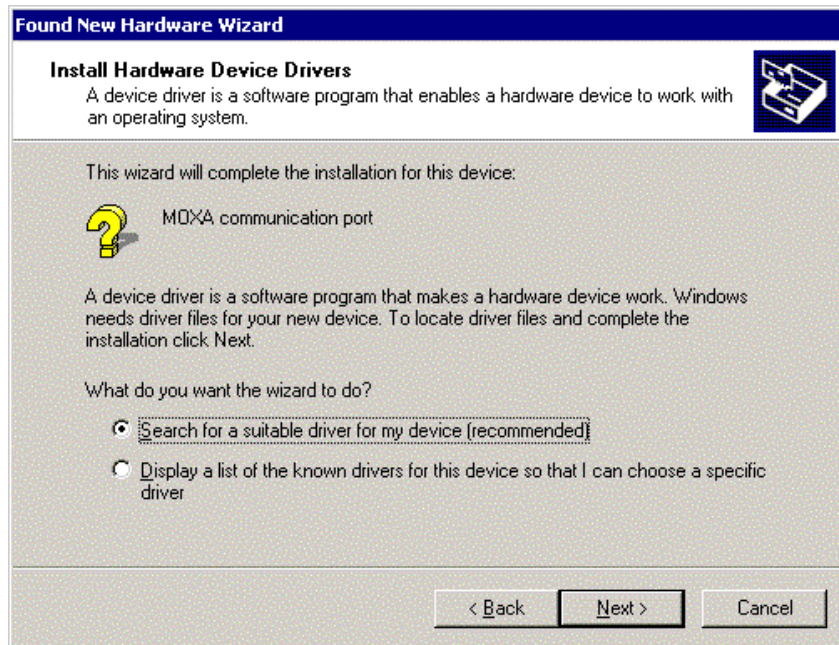


Figure.2-10

11. Choose "Specify a location" and click [Next]. (Figure.2-11)

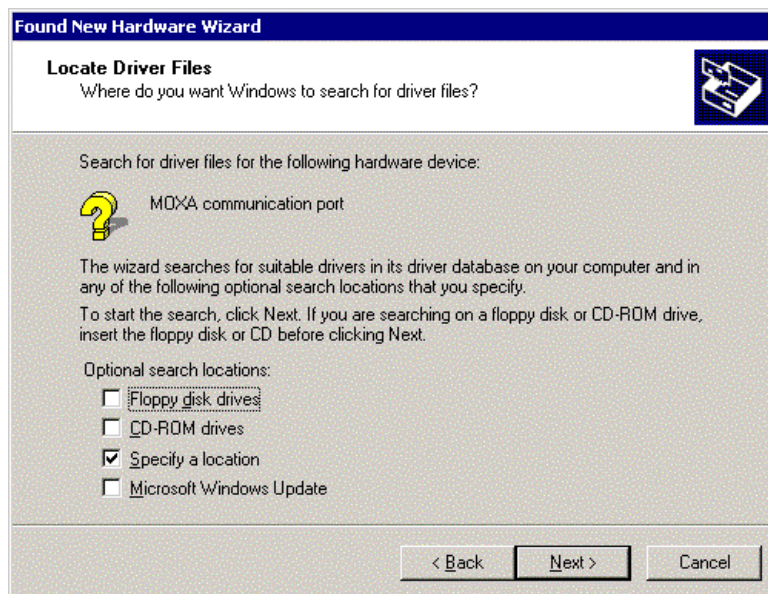


Figure.2-11

- Specify driver location for the Wizard. Assume that the CD-ROM drive letter is "F:", enter the driver location in the window. (Figure.2-12)



Figure.2-12

- Next, the window appears the message "Driver Files Search Results" with MOXA communication port, means Windows found a ports' driver for your device. Click [Next] to start installation. (As Figure.2-13)



Figure.2-13

14. After all files copy to the system, The Windows has finished the port0' driver installation then click [Finish] to install the others. This procedure will take for a while depends on the ports you install. (As Figure.2-14~ Figure.2-15)



Figure.2-14

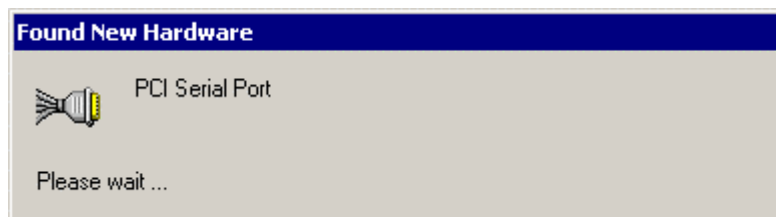


Figure.2-15

The whole procedure is finished when the window of “Found New Hardware” disappears.

If you would like to know the result of this installation, please refer to the paragraph four “Check the Installation Result”.

### 3. ISA Boards' Driver Installation Procedure

This paragraph illustrates the driver installation procedure for MOXA C218Turbo and C320Turbo under Windows 2000.

**Note:**

- Make sure the C320Turbo board has connected with extension modules, CPU and UART modules, and must be installed ready before PC power on.
- The following illustration will be based on C320Turbo. The installation procedure for C218Turbo is same as that of C320Turbo/PCI.
- The following procedure will base on our factory default settings.

C320 Turbo Series: Memory Address : DC000

IRQ: : 10

C218 Turbo Series: Memory Address : D8000

IRQ: : 11

Refer to the Hardware Installation of MOXA Users Manual for more information.

#### First Time Installation Procedures

1. PC power off.
2. Insert the MOXA ISA series boards into the PC's ISA slot.
3. PC power on.
4. Select [Start]→ [Settings]→ [Control Panel]→[System]→[Hardware Wizard]. Under the panel of "System Properties", click the panel of "Hardware Wizard" to enter the procedure to enter "Add/Remove Hardware Wizard". Click [Next] to continue.

(As Figure.3-1 ~ Figure.3-2)

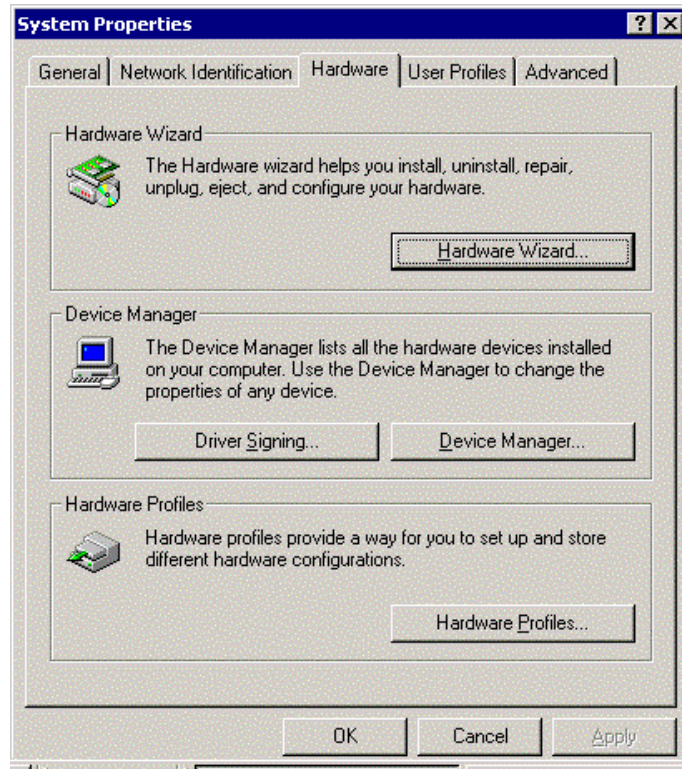


Figure.3-1



Figure.3-2

5. Choose "Add/Troubleshoot a device..." and click [Next] to continue. (As Figure.3-3)

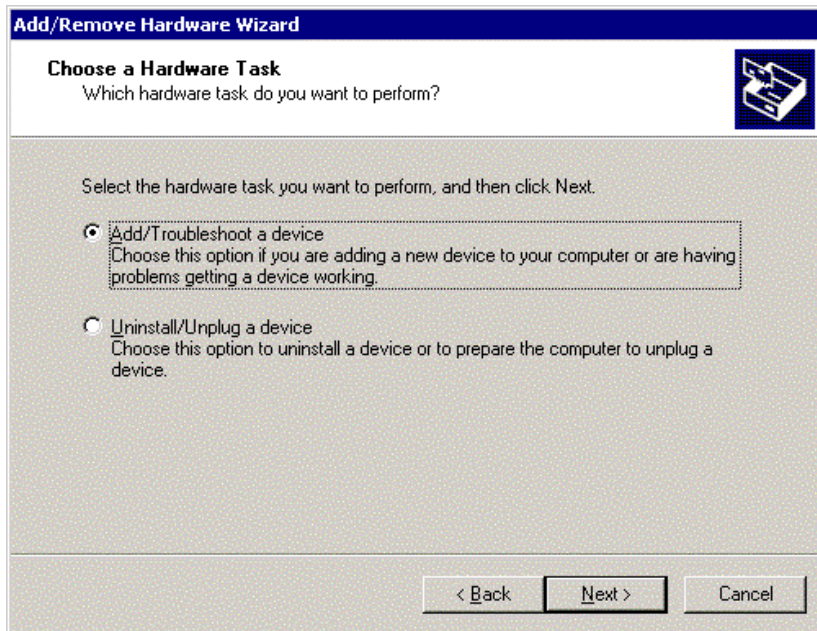


Figure.3-3

6. Press "Add a new device" from the devices selected list, and click [Next] to continue. (As Figure.3-4)

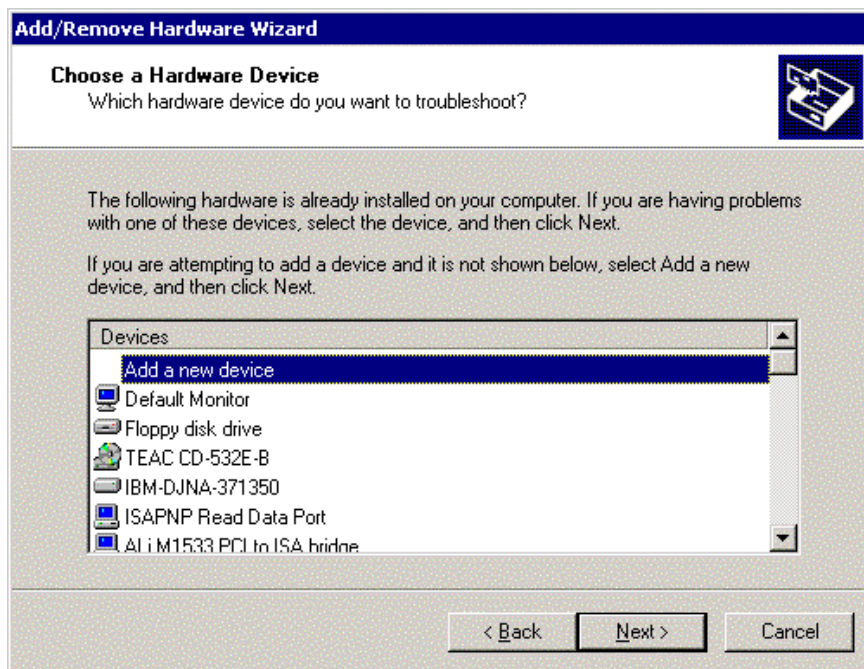


Figure.3-4

7. Choose " No, I want to ..." and then click [Next]. (As Figure.3-5)

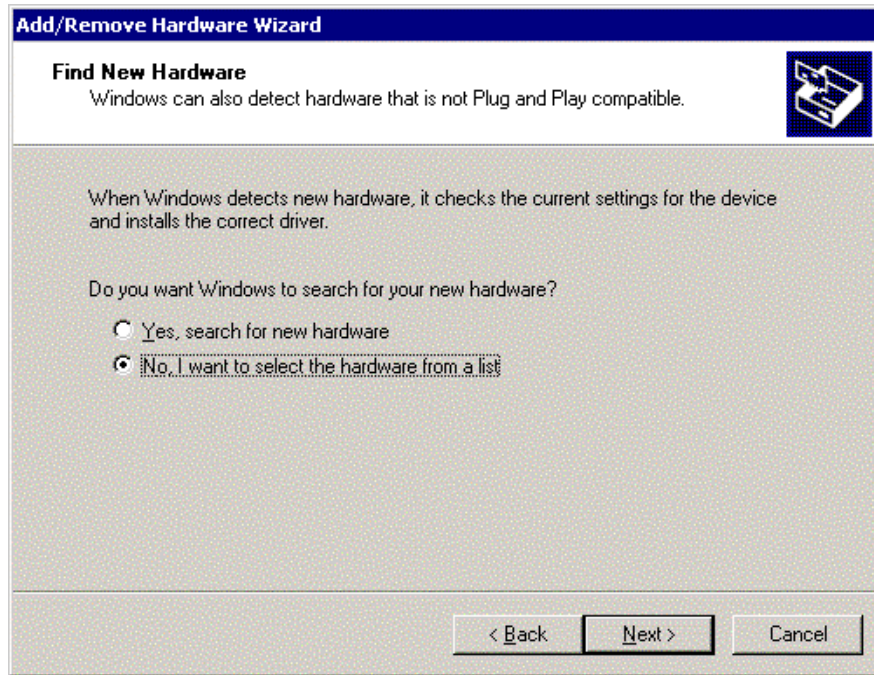


Figure.3-5

8. In the "Hardware Type", select "Multi-port series adapters" and click [Next] to enter the Manufactures/Models list box. (As Figure. 3-6)

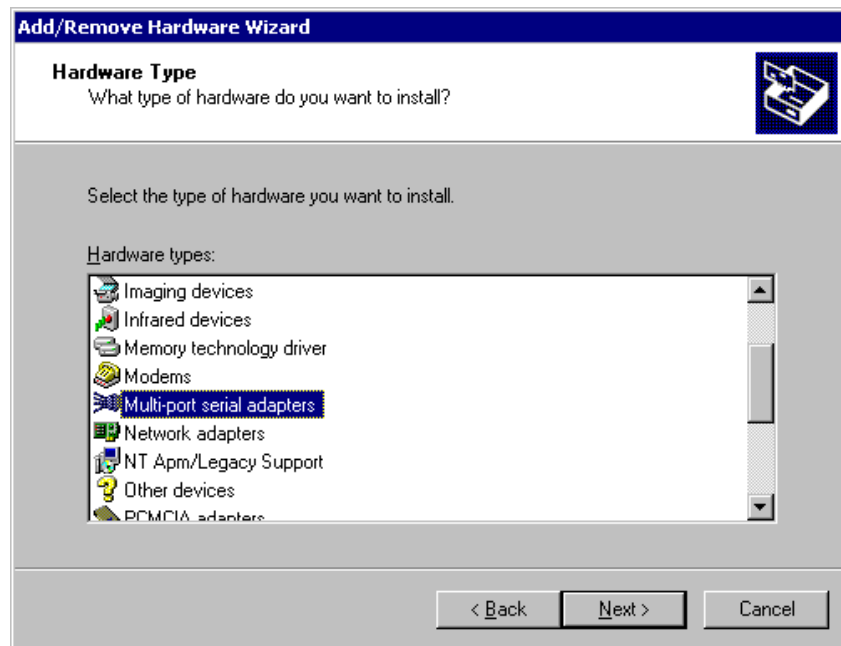


Figure.3-6

- Then, in the window of “Add/Remove Hardware Wizard” select “Have Disk...] and click [Next] to continue. Then, insert the MOXA driver CD-ROM and specify the driver location for the Wizard. Assume that the CD-ROM driver letter is “F:”, enter the driver location in the window. And then click [OK] to continue. (As Figure.3-7)

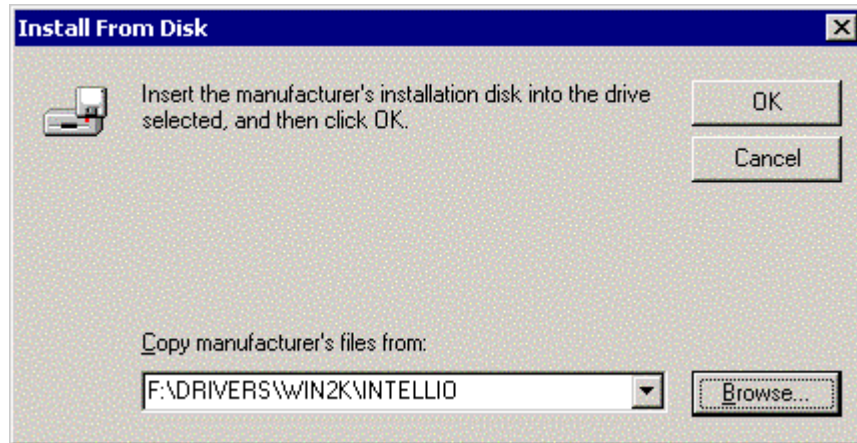


Figure.3-7

- Choose the model number of MOXA Intellio Family. Here is the case for C320Turbo, so select “MOXA Intellio C320Turbo Series” and click [Next] to continue. (As Figure.3-8)

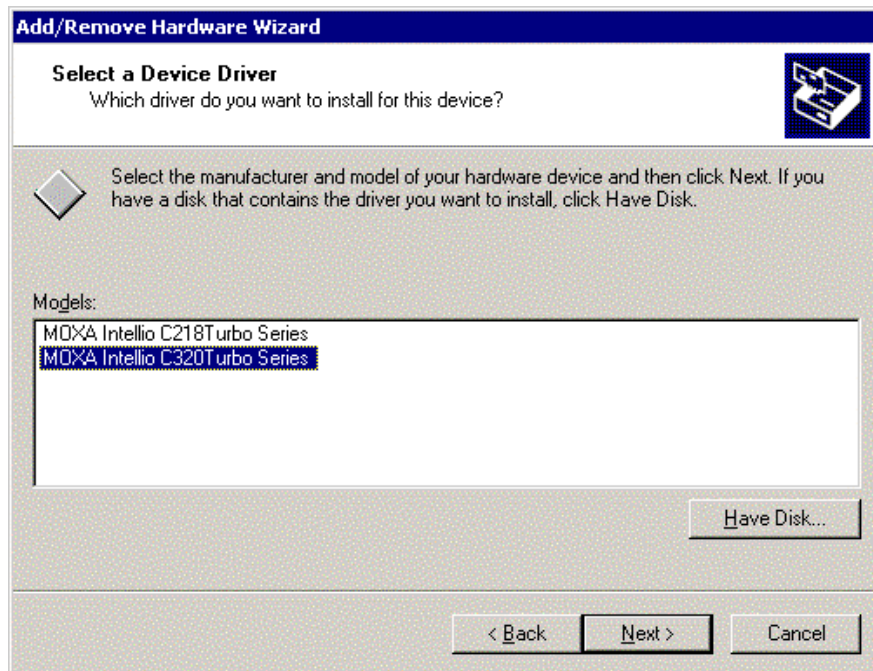


Figure.3-8



11. The window “Completing the Found New Hardware Wizard” with the model number for the board. That means, Windows has finished the board’s driver installation. Click [Finish] to enter the section of ports’ driver installation. (As Figure.3-9)

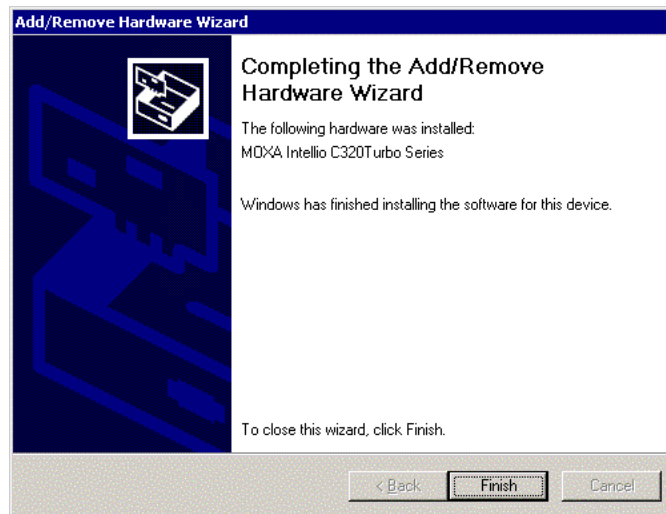


Figure.3-9

12. Up to now, the board installation is finished. Next, Windows 2000 starts to install port devices. The “Found New Hardware” window appears again for port installation. In “ Found New Hardware Wizard “, click [Next] to go on the port driver installation. (As Figure.3-10)



Figure.3-10

13. Choose "Search for a suitable driver..." and click [Next] to search suitable driver for the ports' driver installation. (As Figure.3-11)

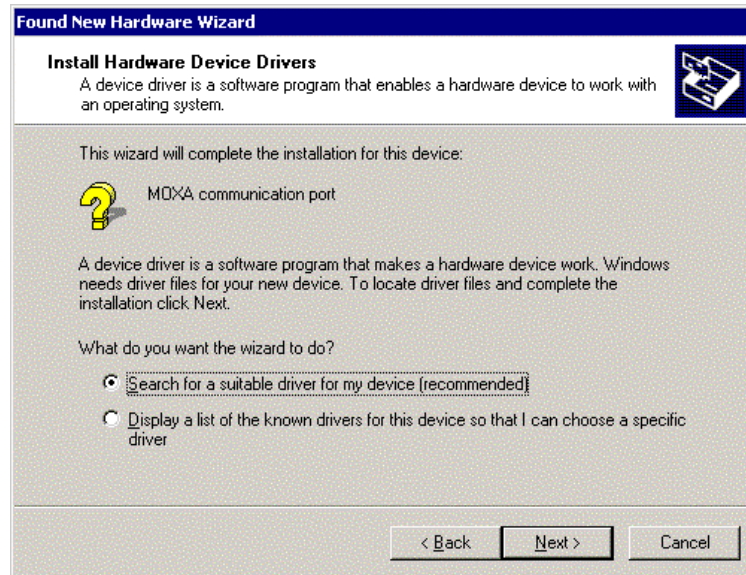


Figure.3-11

14. Choose "Specify a location" and [Next] to install the ports' driver. (As Figure.3-12)

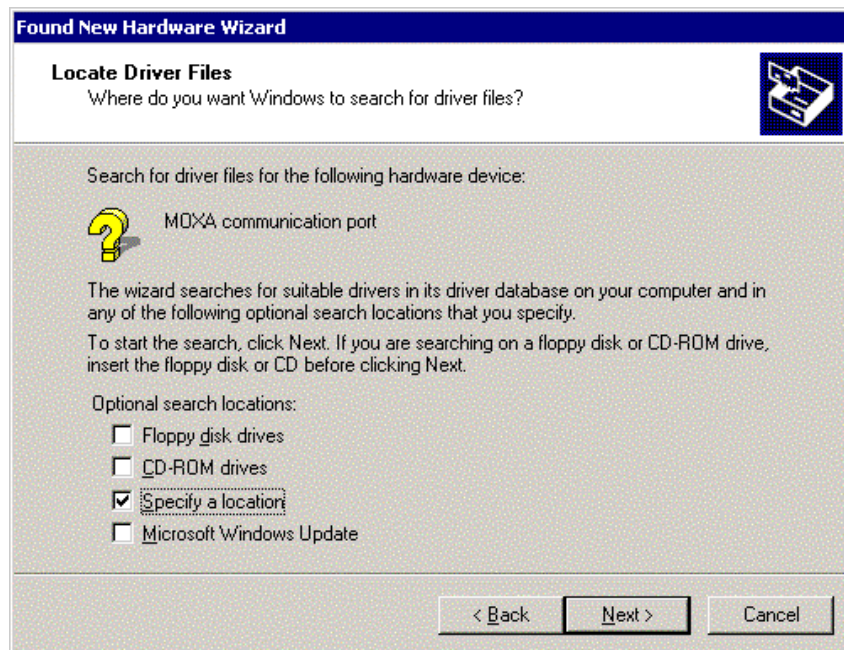


Figure.3-12

15. Then, in the window of "Add/Remove Hardware Wizard" select "Have Disk...]" and click [Next] to continue. Then, insert the MOXA driver CD-ROM and specify the driver location for the Wizard. Assume that the CD-ROM driver letter is "F:", enter the driver location in the Windows. And then click [OK] to continue. (As Figure.3-13)

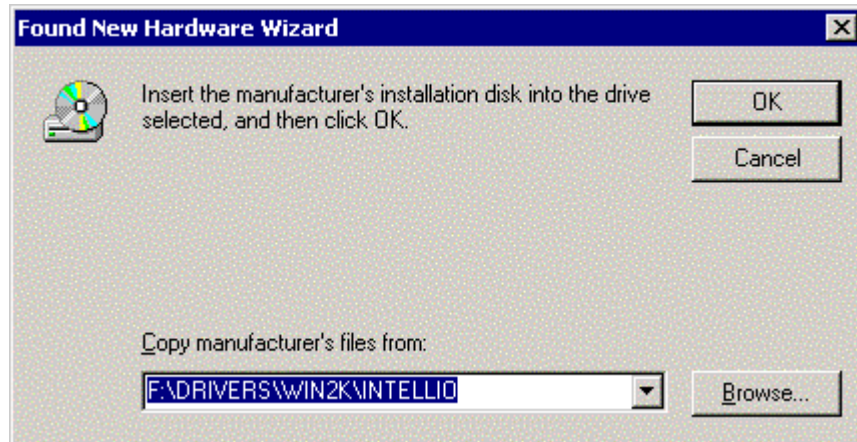


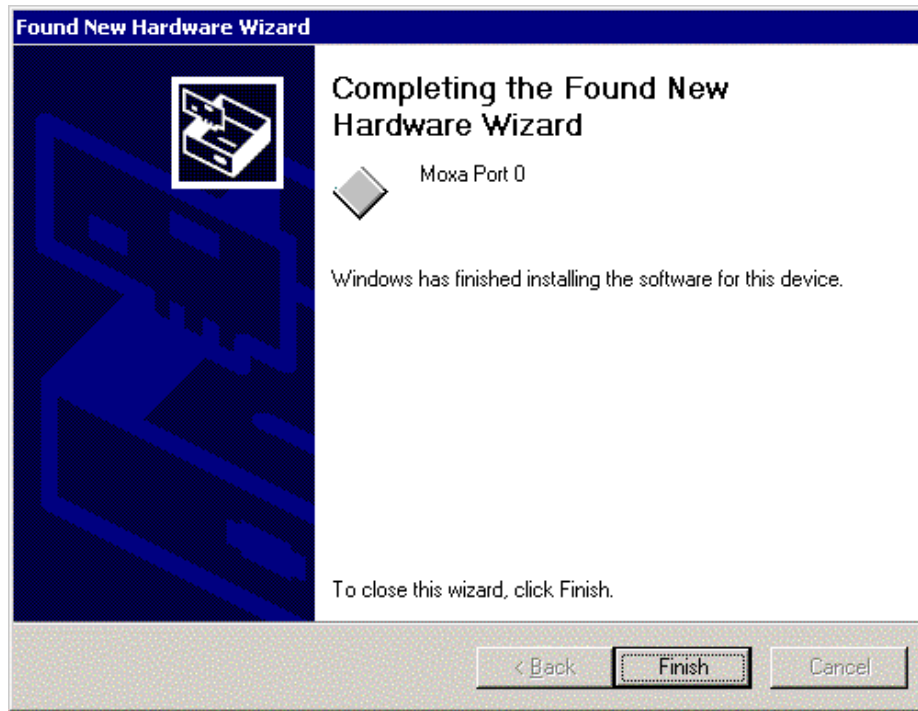
Figure.3-13

16. Next, the screen appears the message "Driver Files Search Results " with MOXA communication port to inform you that Windows found a driver for your device. Click [Next] to start installation. (As Figure.3-14)



Figure.3-14

17. After all files copy to the system, the window “Found New Hardware Wizard“ display “MOXA port 0”, that means, Windows has finished the port0’ driver installation, click [Finish] to install the others. This procedure will take for a while depends on the number of ports you install.(As Figure.3-15~Figure.3-16)



**Figure.3-15**



**Figure.3-16**

The whole procedure is finished when the window of “Found New Hardware” disappears. If you would like to know the result of this installation, please refer to the paragraph four “Check the Installation Result”.

## 4. Change the Multi-port Board Properties

If your ISA board configuration is not set as default, you'll need to change the driver's settings to match hardware configuration.

4.1 Select "Start" → "Settings" → "Control Panel" → "System" → "Hardware" → "Device Manager".

4.2 Expand the "Multiport Serial Adapters", you will see the MOXA board model number.

Double click on the model number, and select "Resources" tab in MOXA board property window. (As figure 4-1)

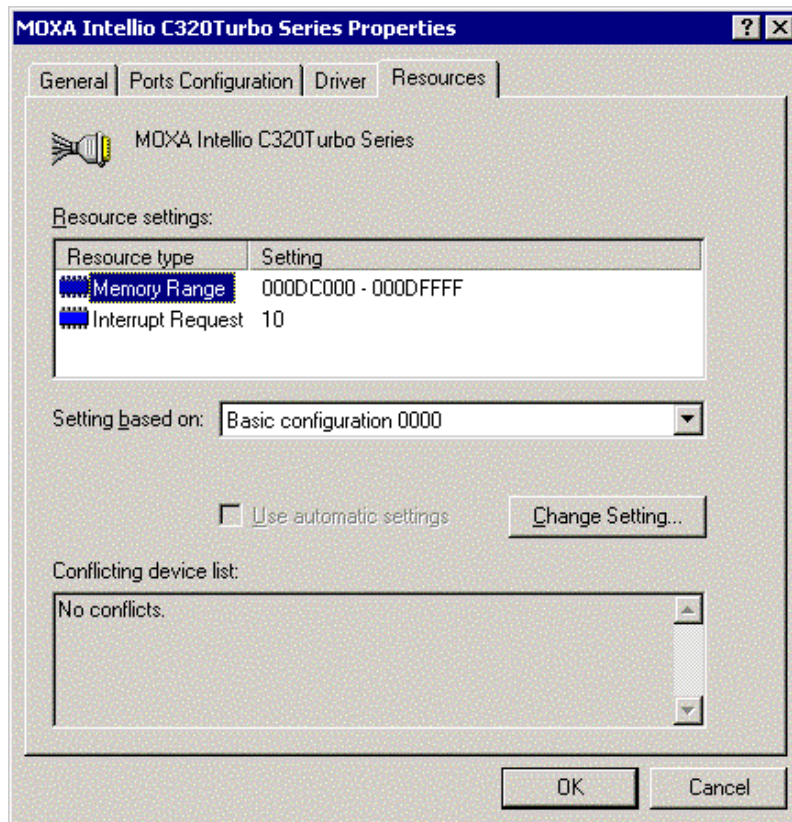


Figure. 4-1

- 4.3 Select "Basic configuration 0000" in "Setting based on:" option.
- 4.4 Highlight "Memory range " and click "Change Setting...". You may change memory settings in "Edit Memory Range" window. Click OK to back to board properties window.

(As figure.4-2)

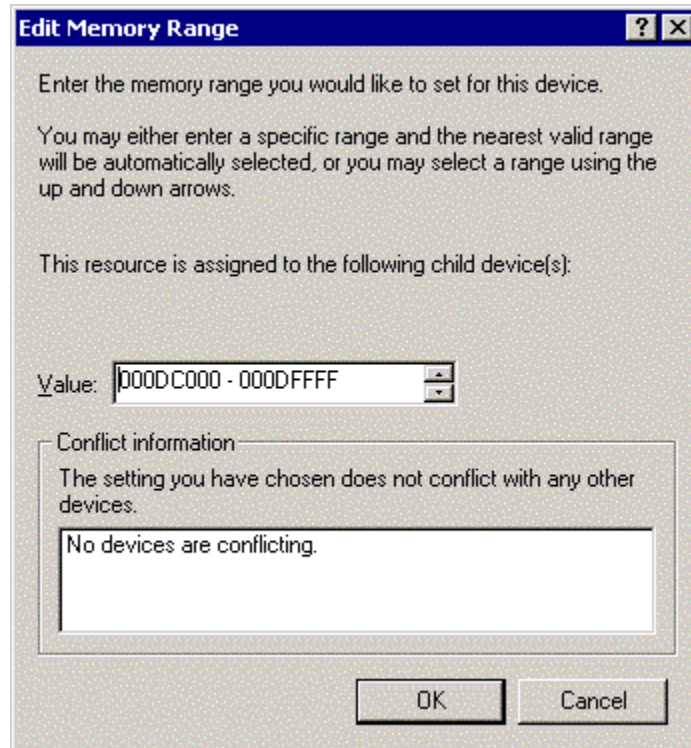


Figure. 4-2

- 4.5 Highlight “Interrupt Request” and click “Change Setting...”. You may change IRQ settings in “Edit Interrupt Request” window. Click [OK] to back to board properties window.

(Figure. 4-3)

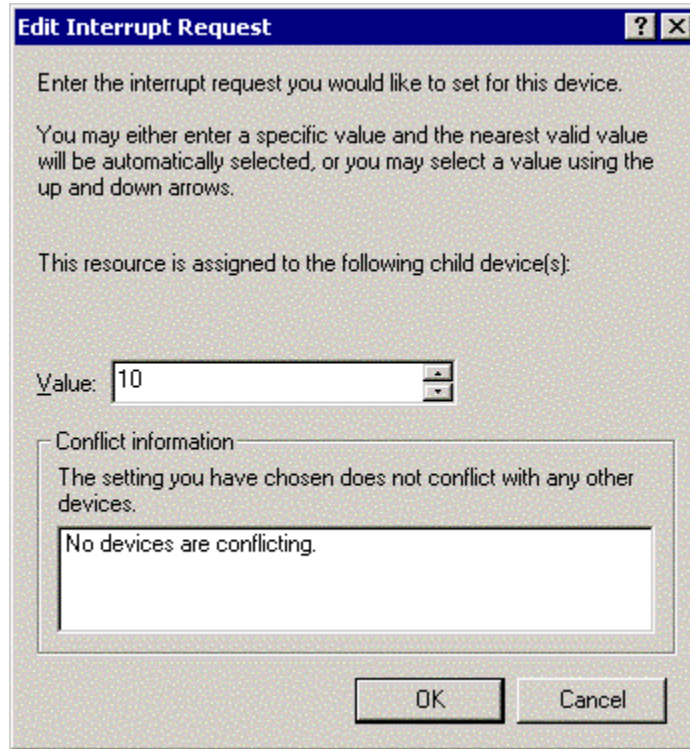


Figure. 4-3

- 4.6 In board properties window, click [OK] to finish the configuration. Then click [Yes] in “System Settings Change” window to restart Windows system. (Figure. 4-4)

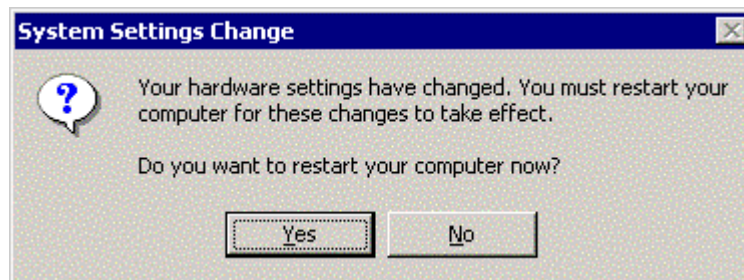


Figure. 4-4

## 5. Check the Installation Result

**Note:** The following procedure will base on MOXA C320Turbo series.

To check the Installation Result, there are three approaches as following.

### 5.1 Device Manager:

- a. You can diagnose the installation result by selecting “Start” → “Settings” → “Control Panel” → “System” → “Hardware” → “Device Manager”. If the driver installation for new added device is successful, you can see the model number of the Moxa board.
- b. Click “Device Manager” to enter the devices list box.  
Select the “Mutiu-port serial adapter” and “Ports(COM&LPT)” folder and expend them.
- c. In Device Manager you can see the model number of Moxa boards after expanded the “Multi-port series adapters”.  
(As Figure.5-1~ Figure.5-2)
- d. You may expand the “Ports (COM&LTP)” to check the status of COM ports. All illustrated in figure5-2, the illustration is successful. If there’s any mark on the icon, the installation may have problem.
- e. You may refer to Even Log for detail reason.



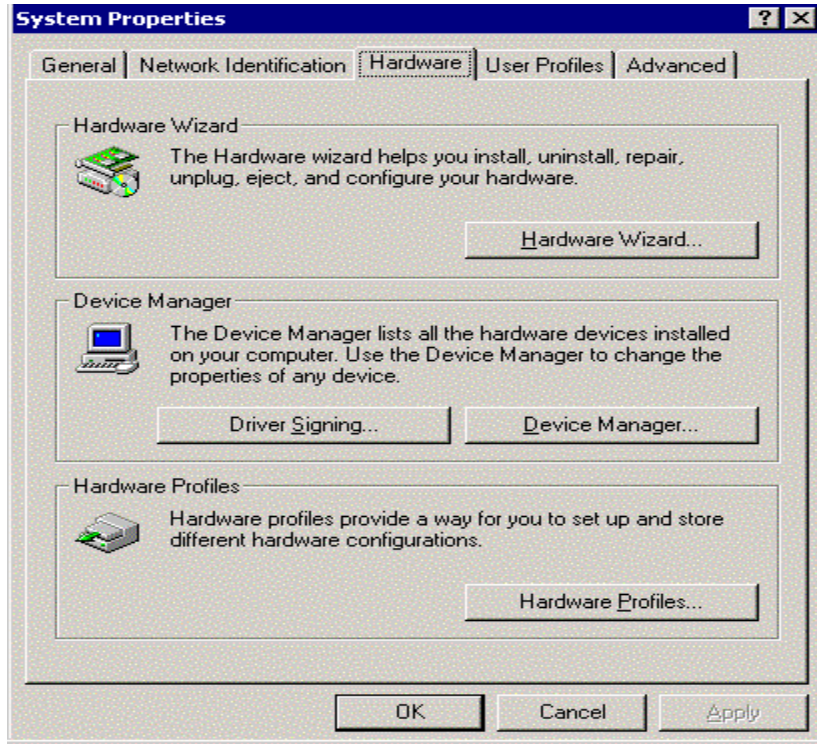


Figure.5-1

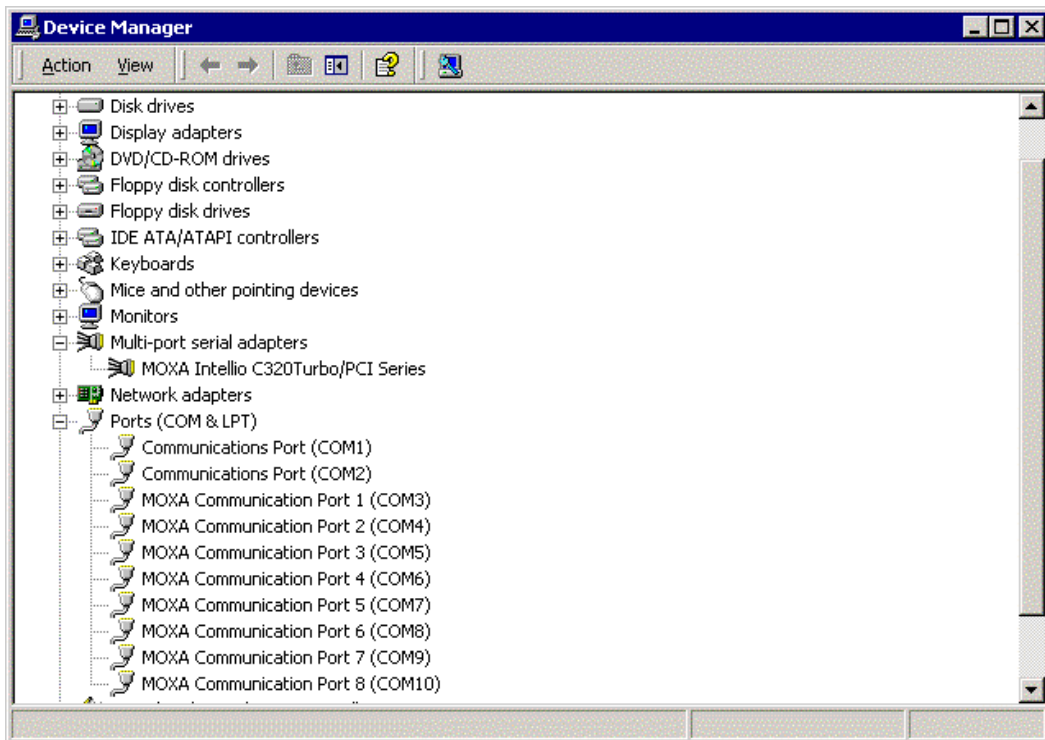


Figure.5-2

5.2 **PComm Diagnostic**, which is a convenient diagnostic program for MOXA boards only, provides internal and external test such as IRQ, TxD/RxD, UART, CTS/RTS, DTR/DSR, DTR/DCD test and so on. This program can verify correct operation of both the H/W and S/W for all MOXA boards and ports.

To run diagnostic, click on “Start”→”Programs”→”PComm Lite 2000 ver.1.0”→”PComm Diagnostic”.

Please refer to on-line help of PComm Lite for more information.

5.3 **Even Log**: To check the Even Log for MOXA boards, click “Start”→”Settings”→ “Control Panel”→”Administrative Tools”→ “Event Viewer” to enter Event Viewer program. In system category, find latest warning message relevant to MOXA driver. (As Figure.1)

## 6. Uninstall

- 6.1 Select "My computer" → "Control Panel" → "System" then enter the window of "System Properties". Click on "Hardware" tab then click "Device Manager" into Device Manager window (As Figure.6-1)

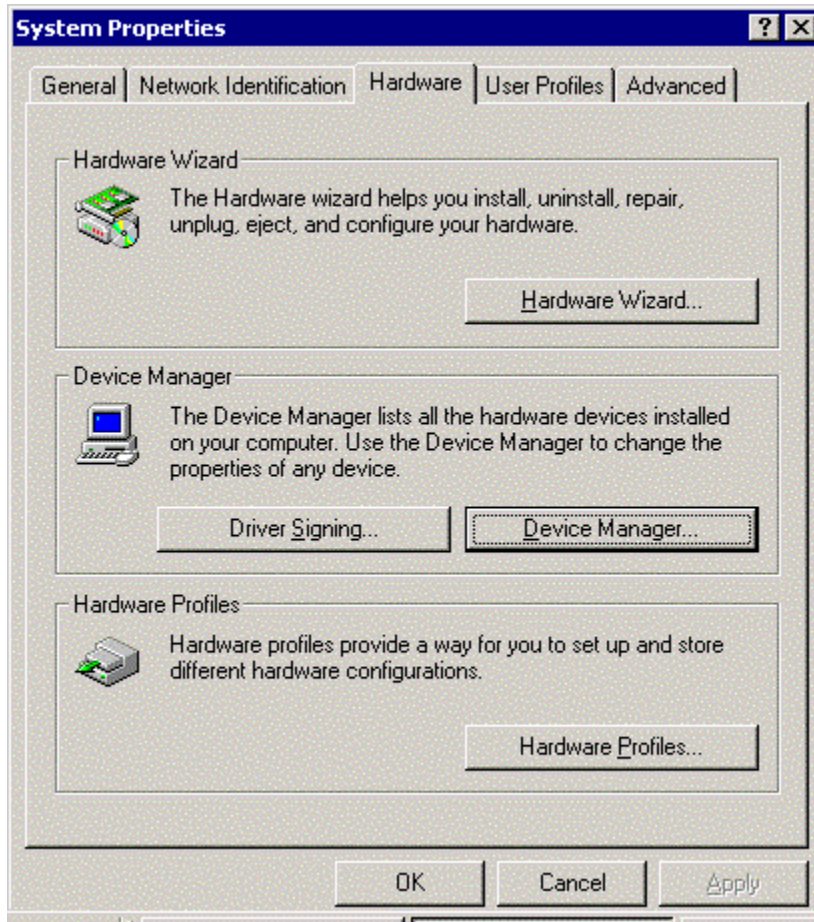


Figure.6-1

6.2 In Device Manager window, click on "Multiport serial adapters" to expand it. You can see MOXA board with model number listed. Click right key of mouse on MOXA board model number, you'll see a menu appears on the screen. Click on "Uninstall" to uninstall the driver. (As Figure.6-2)

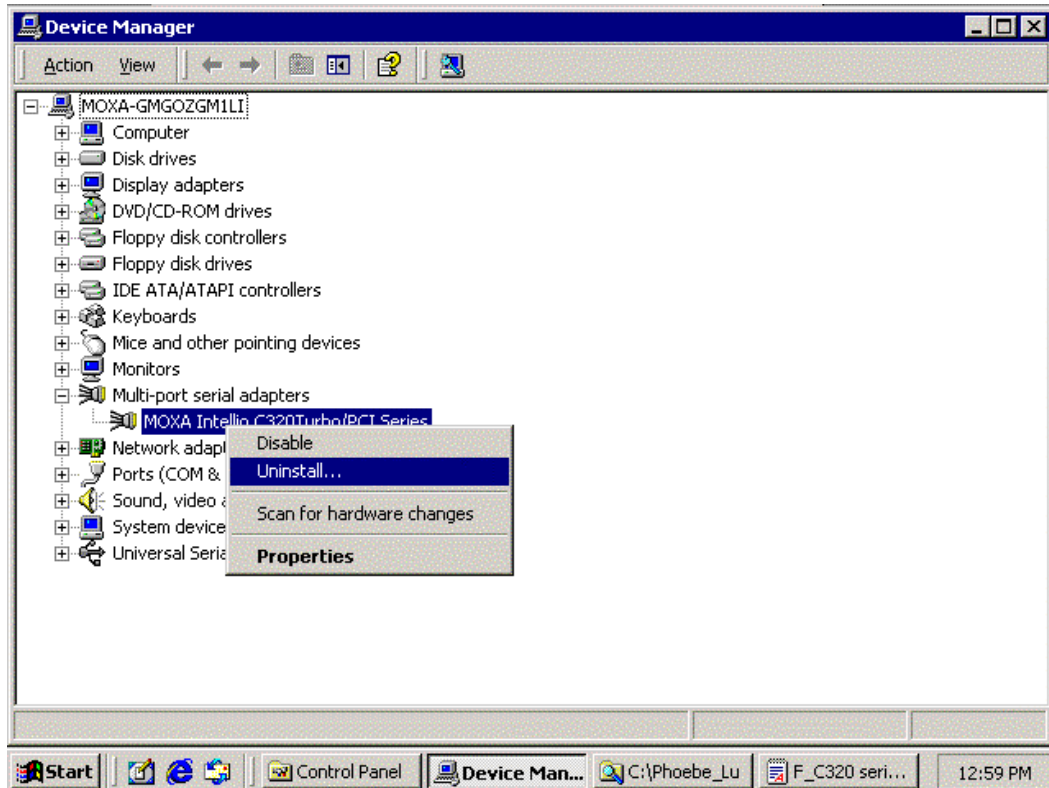


Figure.6-2

6.3 Click [OK] in "Confirm Device Removal" window to remove the driver. (As Figure.6-3)



Figure.6-3