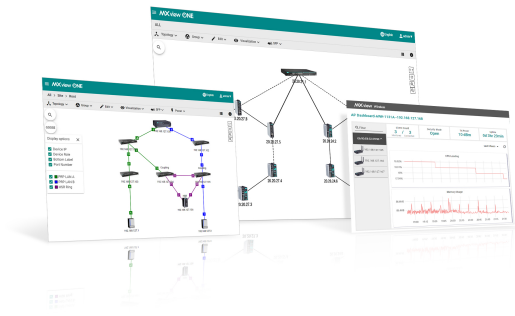


MXview One Series

Next-generation industrial network management platform



Features and Benefits

- Discovers and visualizes network devices and physical connections automatically
- Central management of configurations and firmware for Moxa devices
- Multiple options for events and notifications with self-defined threshold and duration
- Provides RESTful API and web widget to embed MXview One into industrial applications
- Dynamic topology view shows the status of wireless links and connection changes at a glance¹
- Visual, interactive roaming playback function to review the roaming history of clients¹
- Detailed device information and performance indicator charts for individual AP and client devices¹
- Full visibility of A/B LAN redundancy through a visualized PRP/HSR network topology and substation packet flow information²
- GOOSE message path tracking for fast and efficient troubleshooting²
- Configure and deploy firewall policies to routers and firewalls on demand³
- Schedule or manually update IPS patterns and cybersecurity packages³
- Aggregated cybersecurity events and customizable real-time notifications³

Introduction

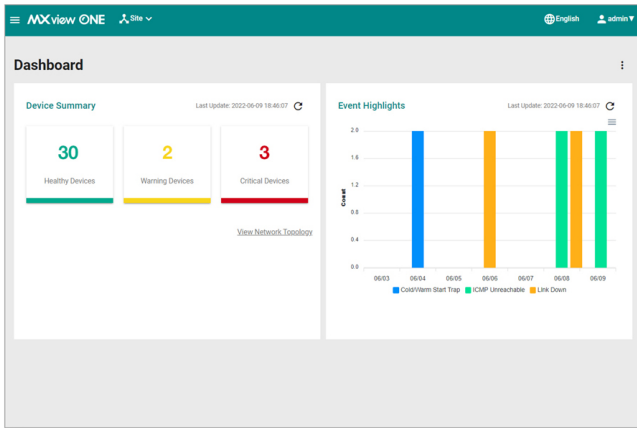
Moxa's MXview One next-generation network management software is designed for monitoring and diagnosing networking devices in industrial networks. MXview One provides an integrated management platform that can discover networking devices and SNMP/IP devices installed on subnets. All selected network components can be managed via a web browser from a local site or through remote access—anytime and anywhere.

In addition, MXview One supports the optional MXview Wireless¹, MXview Power², and MXview Security³ add-on modules. MXview Wireless provides additional advanced functions for wireless applications to monitor and troubleshoot your network, and help you minimize downtime. MXview Power provides additional advanced functions for power applications based on IEC 61850 to monitor and troubleshoot substation networks in real-time. MXview Security provides additional advanced functions to enhance field security, including centralized management and deployment of firewall policies, and updating cybersecurity packages.

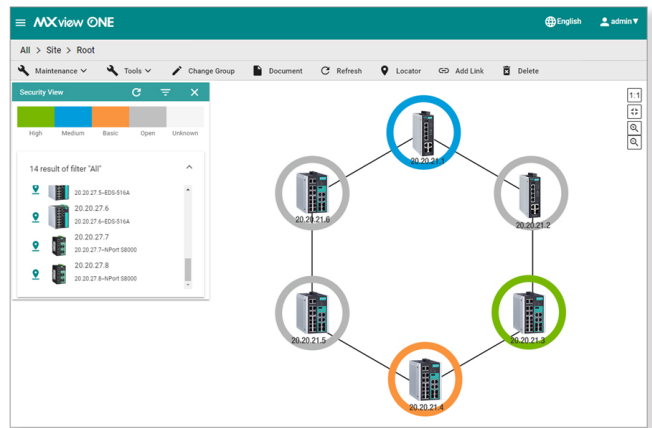
Visualization

- Discovers up to 2,000 Moxa devices and SNMP/ICMP devices within scan range
- Visualization of redundant link status and device roles of network redundancy protocols
- Security view for the security status of network devices with industrial security standard
- A network management dashboard to view the network status quickly
- Visualization of network traffic loading with color-coded links
- Visualization of managed PoE device power consumption
- SFP list for fiber check
- Wireless device dashboard that shows dynamic AP-client relationships and performance indicator charts for wireless devices¹
- Roaming playback to review a client's roaming status¹
- PRP/HSR visualization for power applications compliant with IEC-61850²
- MMS protocol to identify related IED devices²

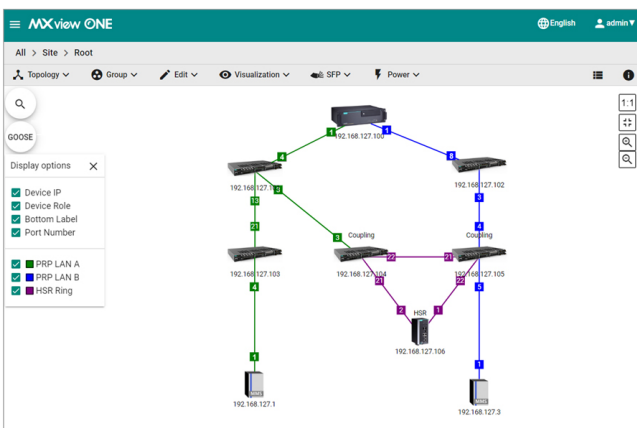
1. This feature requires the MXview Wireless add-on license (LIC-MXviewOne-ADD-WIRELESS-MR), which can be purchased separately. An active MXview One license is required in order to activate the add-on license.
2. This feature requires the MXview Power add-on license (LIC-MXviewOne-ADD-POWER-MR), which can be purchased separately. An active MXview One license is required in order to activate the add-on license.
3. This feature requires the MXview Security add-on license (LIC-MXviewOne-ADD-SECURITY-MR), which can be purchased separately. An active MXview One license is required in order to activate the add-on license.



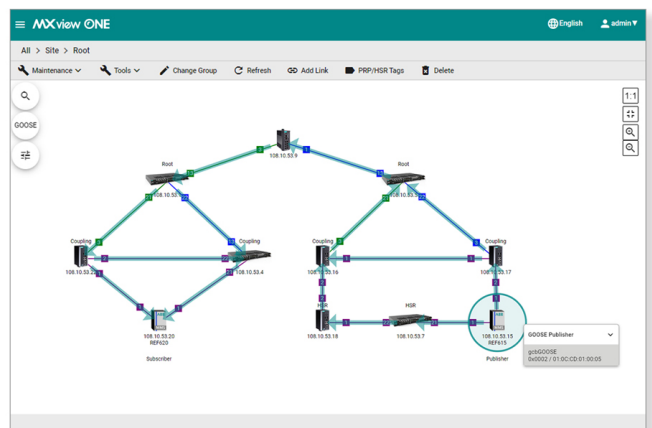
Main Dashboard



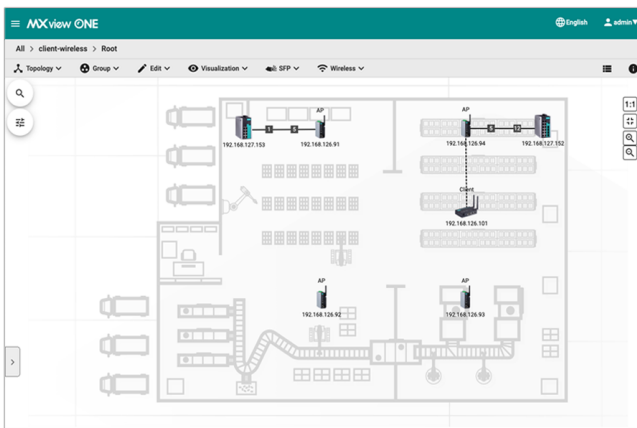
Security View



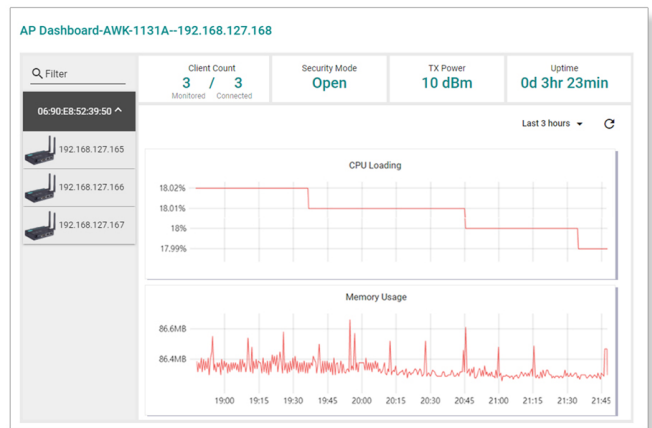
Power Redundancy Topology



GOOSE Message Visualization



Dynamic Topology



Device Dashboard

Network Diagnostics and Event Notifications

- Detect problems in real-time with SNMP trap/inform, or periodic polling
- Generate trend graphs to track bandwidth utilization and error packet rate statistics, accurate to four decimal places
- Supports Syslog server for centralized message management

- Configurable event notification alarms sent through email
- Multiple options for events with self-defined threshold and duration
- Real-time device availability monitoring
- Provides RESTful API and web widget for integrating MXview One into the existing system

Comprehensive Reports

- Generate an inventory report for each device on the network
- Compile comprehensive device properties report

Centralized Configuration and Firmware Management

- Manage device firmware from a single platform
- In one click, back up the configuration of multiple devices and the entire MXview One database, including topology, job scheduling, events, and device properties
- Scheduling for periodic configuration backup
- Save history of configuration changes
- Comparison tool for checking differences between two configurations

Flexible Licenses

- Demand-based licenses to increase node limit for monitoring
- Optional MXview Wireless, MXview Power, and MXview Security add-on licenses to unlock advanced functions

Device Mass Configuration

- Run CLI scripts and configure customizable automation buttons
- Device management with quick access buttons to easily perform specific actions on devices

Account and Password Management

- View device accounts, conduct account and default password audits, and create temporary accounts for specific devices
- Generate and apply randomized passwords to multiple selected Moxa devices manually or via an automated schedule

Inventory Management

- Show warranty information for Moxa devices and configure warranty expiration notifications
- Rogue device detection to identify connected devices that are not in the current topology

Northbound Interface Integration

- Act as an OPC UA server to transmit information to OPC clients
- Syslog forwarding to send syslog events to a user-specified server

Specifications

Hardware Requirements

CPU	Quad-core CPU or better
RAM	16 GB or higher
Hardware Disk Space	1 TB SSD or higher
OS	Windows 10 (64-bit) Windows 11 (64-bit) Windows Server 2016 (64-bit) Windows Server 2019 (64-bit) Windows Server 2022 (64-bit) Linux Ubuntu 18.04 Linux Ubuntu 20.04 Linux Ubuntu 22.04

Management

Supported Interfaces	SNMPv1/v2c/v3 and ICMP
----------------------	------------------------

Supported Devices

AWK Products	<p>AWK-1121 Series (v1.4 or higher) AWK-1127 Series (v1.4 or higher) AWK-1131A Series (v1.11 or higher) AWK-1137C Series (v1.1 or higher) AWK-1151C Series (v2.0 or higher) AWK-1161A Series (v1.0 or higher) AWK-1161C Series (v1.0 or higher) AWK-1165A Series (v1.0 or higher) AWK-1165C Series (v1.0 or higher) AWK-3121 Series (v1.6 or higher) AWK-3131 Series (v1.1 or higher) AWK-3131A Series (v1.3 or higher) AWK-3131A-M12-RTG Series (v1.8 or higher) AWK-3252A Series (v2.0 or higher) AWK-4121 Series (v1.6 or higher) AWK-4131 Series (v1.1 or higher) AWK-4131A Series (v1.3 or higher) AWK-4252A Series (v2.0 or higher)</p>
DA Products	<p>DA-820C Series (v1.0 or higher) DA-682C Series (v1.0 or higher) DA-681C Series (v1.0 or higher) DA-720 Series (v1.0 or higher)</p>
EDF Products	<p>EDF-G1002-BP Series (v3.10 or higher)</p>
EDR Products	<p>EDR-G903 Series (v2.1 or higher) EDR-G902 Series (v1.0 or higher) EDR-810 Series (v3.2 or higher) EDR-8010 Series (v3.1 or higher) EDR-G9004 Series (v3.10 or higher) EDR-G9010 Series (v1.0 or higher)</p>
EDS Products	<p>EDS-405A/408A Series (v2.6 or higher) EDS-405A/408A-EIP Series (v3.0 or higher) EDS-405A/408A-PN Series (v3.1 or higher) EDS-405A-PTP Series (v3.3 or higher) EDS-505A/508A/516A Series (v2.6 or higher) EDS-510A Series (v2.6 or higher) EDS-518A Series (v2.6 or higher) EDS-510E/518E Series (v4.0 or higher) EDS-528E Series (v5.0 or higher) EDS-G508E/G512E/G516E Series (v4.0 or higher) EDS-G512E-8PoE Series (v4.0 or higher) EDS-608/611/616/619 Series (v1.1 or higher) EDS-728 Series (v2.6 or higher) EDS-828 Series (v2.6 or higher) EDS-G509 Series (v2.6 or higher) EDS-P510 Series (v2.6 or higher) EDS-P510A-8PoE Series (v3.1 or higher) EDS-P506A-4PoE Series (v2.6 or higher) EDS-P506 Series (v5.5 or higher) EDS-4008 Series (v2.2 or higher) EDS-4009 Series (v2.2 or higher) EDS-4012 Series (v2.2 or higher) EDS-4014 Series (v2.2 or higher) EDS-G4008 Series (v2.2 or higher) EDS-G4012 Series (v2.2 or higher) EDS-G4014 Series (v2.2 or higher)</p>
EOM Products	<p>EOM-104/104-FO Series (v1.2 or higher)</p>
ICS Products	<p>ICS-G7526/G7528 Series (v1.0 or higher) ICS-G7826/G7828 Series (v1.1 or higher) ICS-G7748/G7750/G7752 Series (v1.2 or higher) ICS-G7848/G7850/G7852 Series (v1.2 or higher) ICS-G7526A/G7528A Series (v4.0 or higher) ICS-G7826A/G7828A Series (v4.0 or higher) ICS-G7748A/G7750A/G7752A Series (v4.0 or higher) ICS-G7848A/G7850A/G7852A Series (v4.0 or higher)</p>
IEX Products	<p>IEX-402-SHDSL Series (v1.0 or higher)</p>

	IEX-402-VDSL2 Series (v1.0 or higher) IEX-408E-2VDSL2 Series (v4.0 or higher)
IKS Products	IKS-6524/6526 Series (v2.6 or higher) IKS-G6524 Series (v1.0 or higher) IKS-G6824 Series (v1.1 or higher) IKS-6726A/6728A Series (v4.0 or higher) IKS-G6524A Series (v4.0 or higher) IKS-G6824A Series (v4.0 or higher) IKS-6728A-8PoE Series (v4.0 or higher)
ioLogik Products	ioLogik E2210 Series (v3.7 or higher) ioLogik E2212 Series (v3.7 or higher) ioLogik E2214 Series (v3.7 or higher) ioLogik E2240 Series (v3.7 or higher) ioLogik E2242 Series (v3.7 or higher) ioLogik E2260 Series (v3.7 or higher) ioLogik E2262 Series (v3.7 or higher) ioLogik W5312 Series (v1.7 or higher) ioLogik W5340 Series (v1.8 or higher)
ioThinX Products	ioThinX 4510 Series (v1.3 or higher)
MC Products	MC-7400 Series (v1.0 or higher)
MDS Products	MDS-G4012 Series (v1.0 or higher) MDS-G4020 Series (v1.0 or higher) MDS-G4028 Series (v1.0 or higher) MDS-G4012-L3 Series (v2.0 or higher) MDS-G4020-L3 Series (v2.0 or higher) MDS-G4028-L3 Series (v2.0 or higher) MDS-G4012-4XGS Series (v3.0 or higher) MDS-G4020-4XGS Series (v3.0 or higher) MDS-G4028-4XGS Series (v3.0 or higher) MDS-G4012-L3-4XGS Series (v3.0 or higher) MDS-G4020-L3-4XGS Series (v3.0 or higher) MDS-G4028-L3-4XGS Series (v3.0 or higher)
MGate Products	MGate MB3170/MB3270 Series (v4.2 or higher) MGate MB3180 Series (v2.2 or higher) MGate MB3280 Series (v4.1 or higher) MGate MB3480 Series (v3.2 or higher) MGate MB3660 Series (v2.5 or higher) MGate 5101-PBM-MN Series (v2.2 or higher) MGate 5102-PBM-PN Series (v2.3 or higher) MGate 5103 Series (v2.2 or higher) MGate 5105-MB-EIP Series (v4.3 or higher) MGate 5109 Series (v2.3 or higher) MGate 5111 Series (v1.3 or higher) MGate 5114 Series (v1.3 or higher) MGate 5118 Series (v2.2 or higher) MGate 5119 Series (v1.0 or higher) MGate 5121 Series (v1.0 or higher) MGate 5122 Series (v1.0 or higher) MGate 5123 Series (v1.0 or higher) MGate 5134 Series (v1.0 or higher) MGate 5135/5435 Series (v1.0 or higher) MGate 5192 Series (v1.0 or higher) MGate W5108/W5208 Series (v2.4 or higher) MGate 5216 Series (v1.0 or higher) MGate 5217I Series (v1.0 or higher)
MRX Products	MRX-G4064 Series (v1.0 or higher) MRX-Q4064 Series (v1.0 or higher)
NAT Products	NAT-102 Series (v3.15 or higher)
NPort Products	NPort S8455 Series (v1.3 or higher) NPort S8458 Series (v1.3 or higher) NPort 5110 Series (v2.10 or higher) NPort 5130/5150 Series (v3.9 or higher) NPort 5200 Series (v2.12 or higher)

	<p>NPort 5100A Series (v1.6 or higher) NPort P5150A Series (v1.6 or higher) NPort 5200A Series (v1.6 or higher) NPort 5400 Series (v3.14 or higher) NPort 5600 Series (v3.10 or higher) NPort 5610-8-DT/5610-8-DT-J/5650-8-DT/5650I-8-DT/5650-8-DT-J Series (v2.7 or higher) NPort 5610-8-DTL/5650-8-DTL/5650I-8-DTL Series (v1.6 or higher) NPort IA5000 Series (v1.7 or higher) NPort IA5150A/IA5150AI/IA5250A/IA5250AI Series (v1.5 or higher) NPort IA5450A/IA5450AI Series (v2.0 or higher) NPort 6000 Series (v1.21 or higher) NPort 6100-G2 Series (v1.0.0 or higher) NPort 6200-G2 Series (v1.0.0 or higher) NPort 5000AI-M12 Series (v1.5 or higher)</p>
OnCell Products	OnCell G4302-LTE4 Series (v2.5 or higher)
PT Products	<p>PT-7528 Series (v3.0 or higher) PT-7710 Series (v1.2 or higher) PT-7728 Series (v2.6 or higher) PT-7828 Series (v2.6 or higher) PT-508/510 Series (v3.0 or higher) PT-G503-PHR-PTP Series (v4.0 or higher) PT-G510 Series (v6.4 or higher) PT-G7728 Series (v5.3 or higher) PT-G7828 Series (v5.3 or higher)</p>
RKS Products	RKS-G4028 Series (v3.0 or higher)
SDS Products	<p>SDS-3006 Series (v3.0 or higher) SDS-3008 Series (v2.1 or higher) SDS-3010 Series (v3.0 or higher) SDS-3016 Series (v2.1 or higher) SDS-G3006 Series (v3.0 or higher) SDS-G3008 Series (v3.0 or higher) SDS-G3010 Series (v3.0 or higher) SDS-G3016 Series (v3.0 or higher)</p>
TAP Products	<p>TAP-213 Series (v1.2 or higher) TAP-323 Series (v1.8 or higher) TAP-6226 Series (v1.8 or higher)</p>
TN Products	<p>TN-4908 Full FE/FE+GbE Series (v3.4 or higher) TN-4908 Full GbE Series (v1.2 or higher) TN-4916-12 FE Series (v3.4 or higher) TN-4916-8PoE Series (v1.2 or higher) TN-4512A Series (v3.10 or higher) TN-4516A Series (v3.6 or higher) TN-4516A PoE Series (v3.6 or higher) TN-4520A PoE Series (v3.10 or higher) TN-4524A PoE Series (v3.6 or higher) TN-4528A PoE Series (v3.8 or higher) TN-4500B Series (v1.0 or higher) TN-G4516 PoE Series (v5.0 or higher) TN-G6512 PoE Series (v5.2 or higher) TN-5508A/5510A Series (v3.8 or higher) TN-5516A/5518A Series (v3.8 or higher) TN-5508A/5510A PoE Series (v3.8 or higher) TN-5516A/5518A PoE Series (v3.8 or higher)</p>
UC Products	<p>UC-2101-LX Series (v1.7 or higher) UC-2102-LX Series (v1.7 or higher) UC-2104-LX Series (v1.7 or higher) UC-2111-LX Series (v1.7 or higher) UC-2112-LX Series (v1.7 or higher) UC-2112-T-LX Series (v1.7 or higher) UC-2114-T-LX Series (v1.7 or higher) UC-2116-T-LX Series (v1.7 or higher) UC-1222A Series (v1.0 or higher) UC-2222A Series (v1.0 or higher) UC-4400A Series (v1.0 or higher) UC-8200 Series with Moxa Industrial Linux 3 (MIL 3) (v1.1 or higher)</p>

V Products	V2406C Series (v1.0 or higher)
VPort Products	VPort 26A-1MP Series (v1.2 or higher) VPort 36-1MP Series (v1.1 or higher) VPort P06-1MP-M12 Series (v2.2 or higher)
WAC Products	WAC-1001 Series (v2.1 or higher) WAC-2004 Series (v1.6 or higher)
For MXview Wireless	<p>AWK-1131A Series (v1.22 or higher) AWK-1137C Series (v1.6 or higher) AWK-1151C Series (v2.0 or higher) AWK-1161A Series (v1.0 or higher) AWK-1161C Series (v1.0 or higher) AWK-1165A Series (v1.0 or higher) AWK-1165C Series (v1.0 or higher) AWK-3252A Series (v2.0 or higher) AWK-3131A Series (v1.16 or higher) AWK-4131A Series (v1.16 or higher) AWK-4252A Series (v2.0 or higher)</p> <p>Note: To use advanced wireless functions in MXview Wireless, the device must be in one of the following operation modes: AP, Client, Client-Router.</p>
For MXview Power	<p>Supports PRP/HSR only: PT-G503 Series (v5.1 or higher) PT-G510 Series (v6.4 or higher) DA-820C Series with DN-PRP-HSR-I210 or DA-PRP-HSR-I210 (OS Windows 10 or higher)</p> <p>Supports PRP/HSR and GOOSE Check: PT-G7728/G7828 with LM-7000H-2GPHR module (v6.2 or higher)</p>
For MXview Security	EDR-8010 Series (v3.0 or higher) EDR-G9010 Series (v3.0 or higher) EDR-G9004 Series (v3.10.0 or higher) EDF-G1002 Series (v3.10.0 or higher) TN-4900 Series (v3.0 or higher)

Package Contents

Number of Supported Nodes	Up to 2000 (may require purchase of expansion licenses)
---------------------------	---

Ordering Information

Model Name	No. of Supported Nodes	Add-on Service
LIC-MXviewOne-NEW-XN-SR	Customizable (Can be used to expand node count)	-
LIC-MXviewOne-ADD-POWER-MR	-	MXview Power
LIC-MXviewOne-ADD-WIRELESS-MR	-	MXview Wireless
LIC-MXviewOne-ADD-SECURITY-MR	-	MXview Security

© Moxa Inc. All rights reserved. Updated Jan 13, 2025.

This document and any portion thereof may not be reproduced or used in any manner whatsoever without the express written permission of Moxa Inc. Product specifications subject to change without notice. Visit our website for the most up-to-date product information.