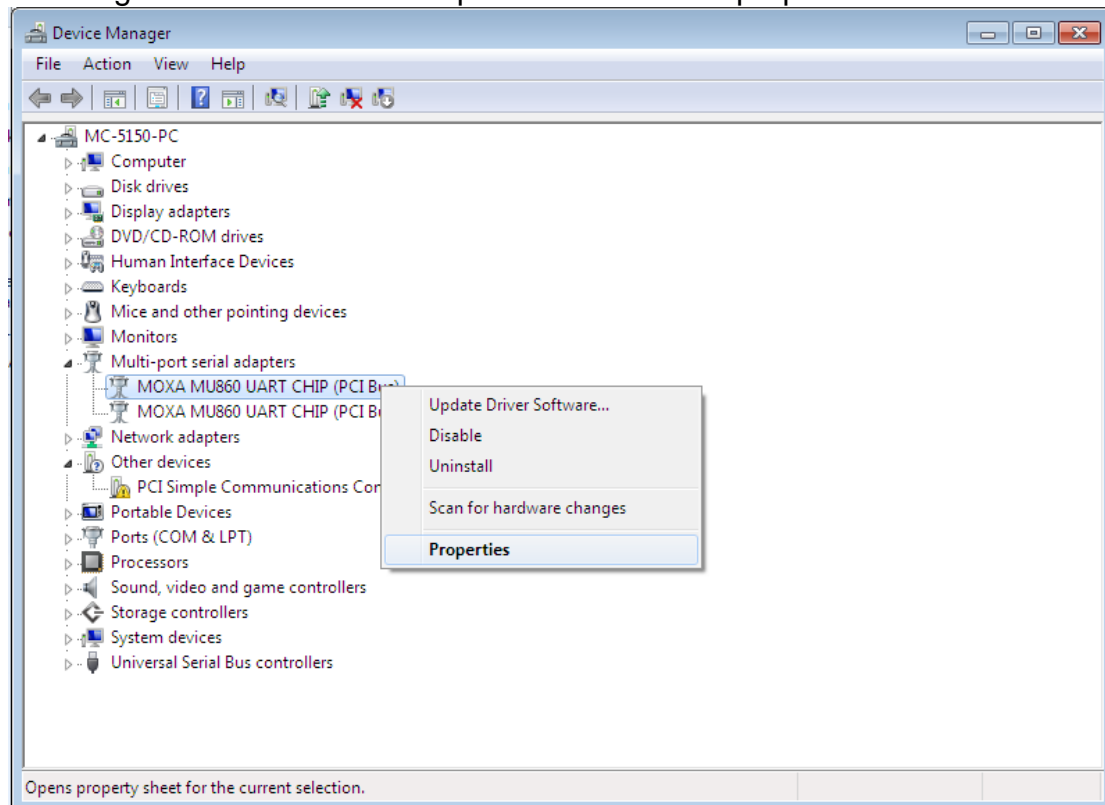


How to change COM port setting

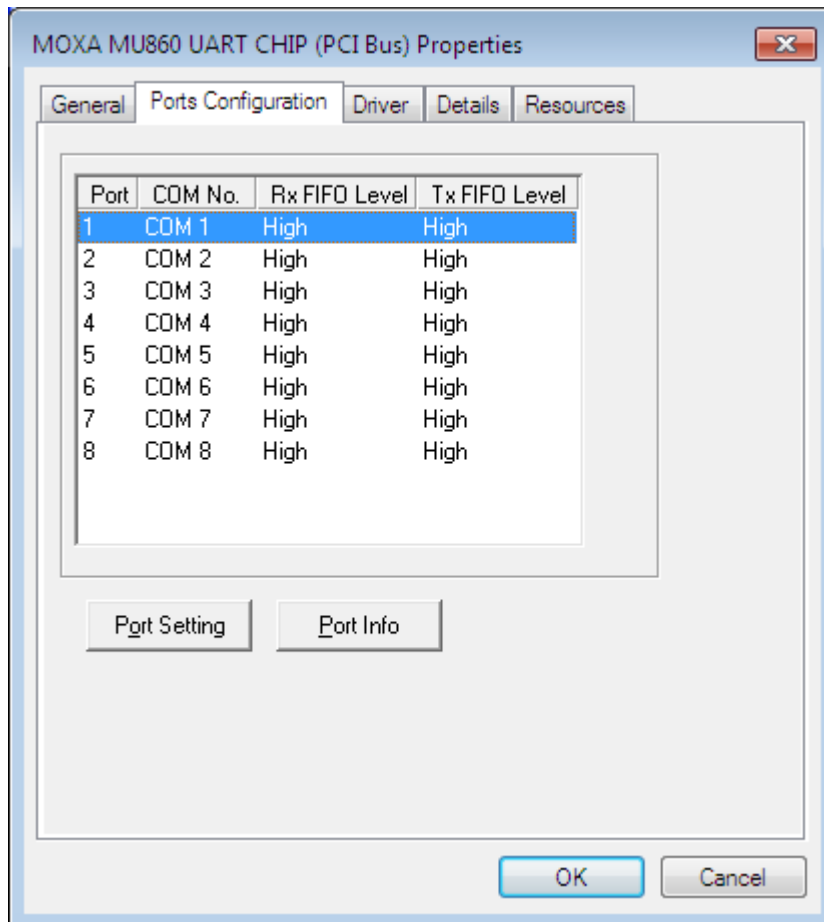
1. Change port settings

1.1. Double-click "UartSetup.exe" and then click "Next".

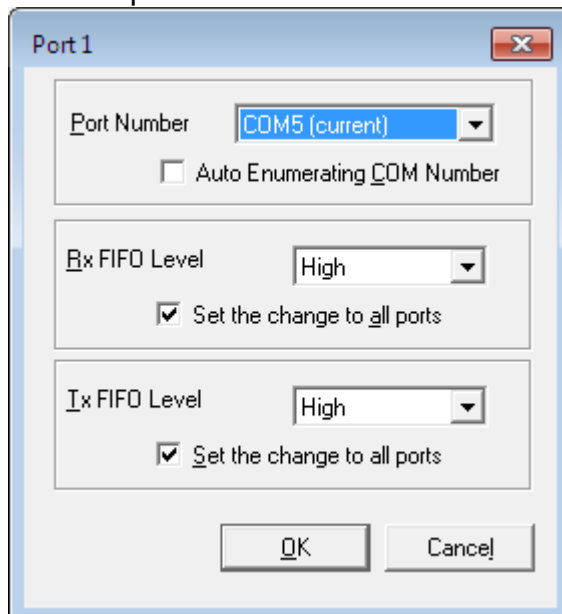
1.2. Right-Click first UART adapter and then click "properties".



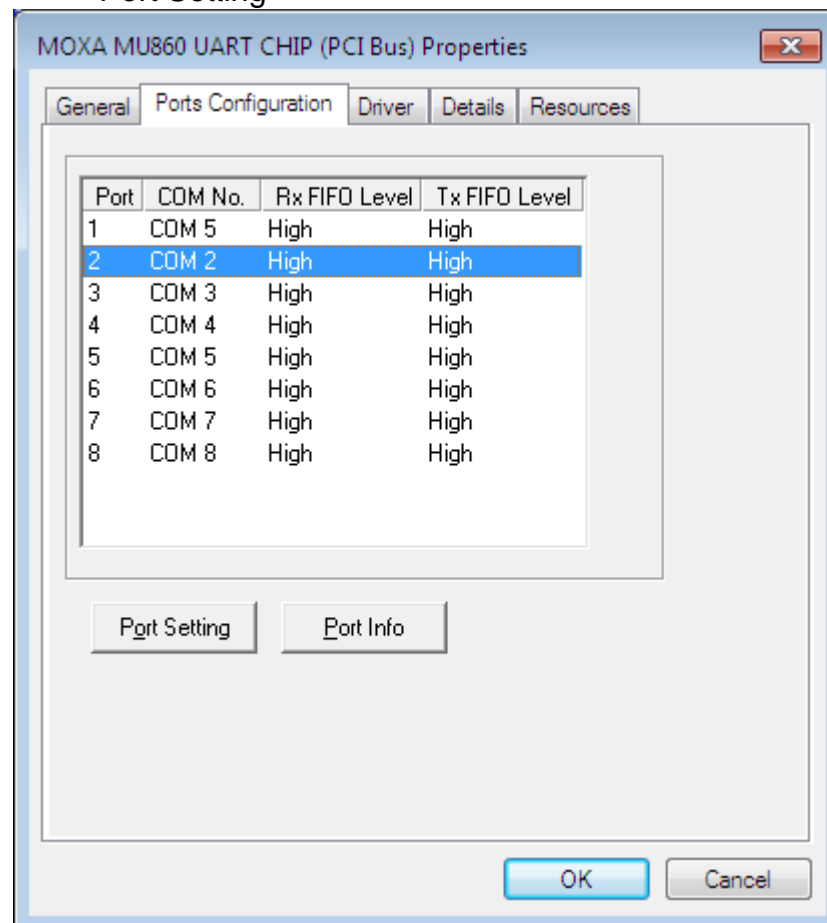
1.3. Change to "Ports Configuration" and select Port1 in the list and then click "Port Setting"



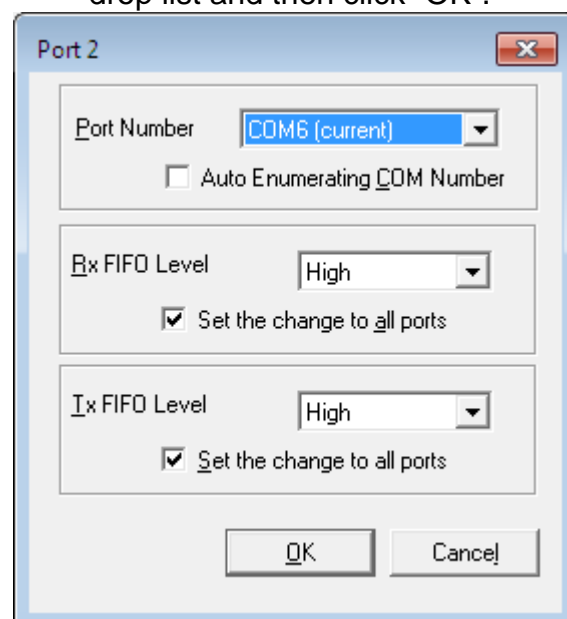
1.4. Un-check “Auto Enumerating COM Number” and Select “COM5” in the drop list and then click “OK”.



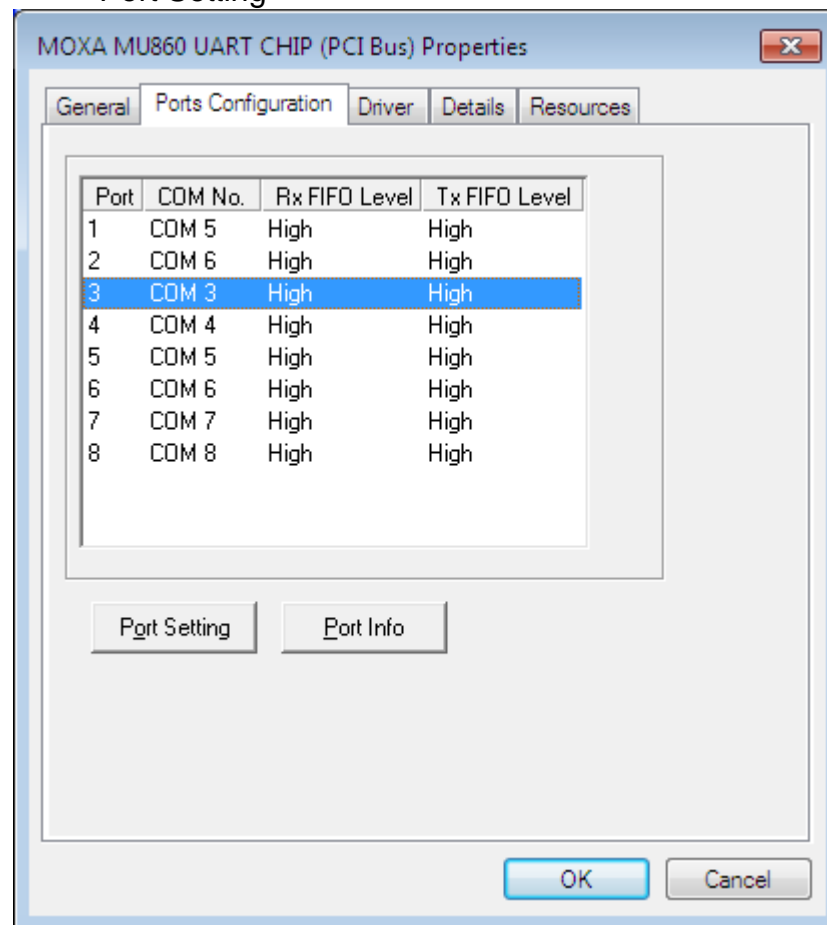
- 1.5. Change to “Ports Configuration” and select Port2 in the list and then click “Port Setting”



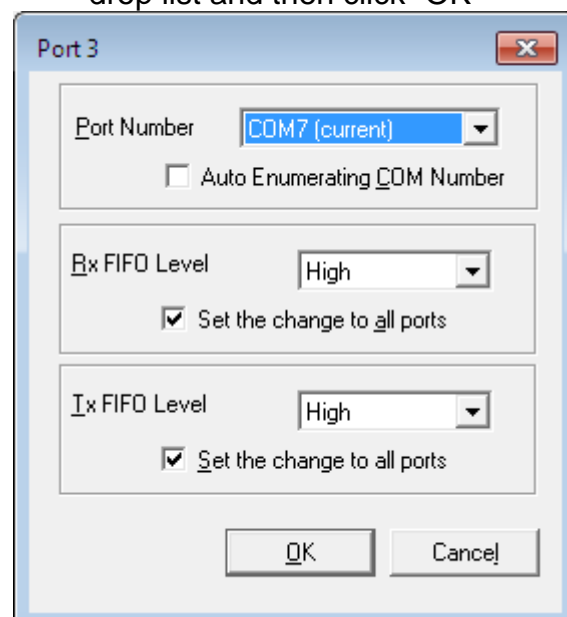
- 1.6. Un-check “Auto Enumerating COM Number” and Select “COM6” in the drop list and then click “OK”.



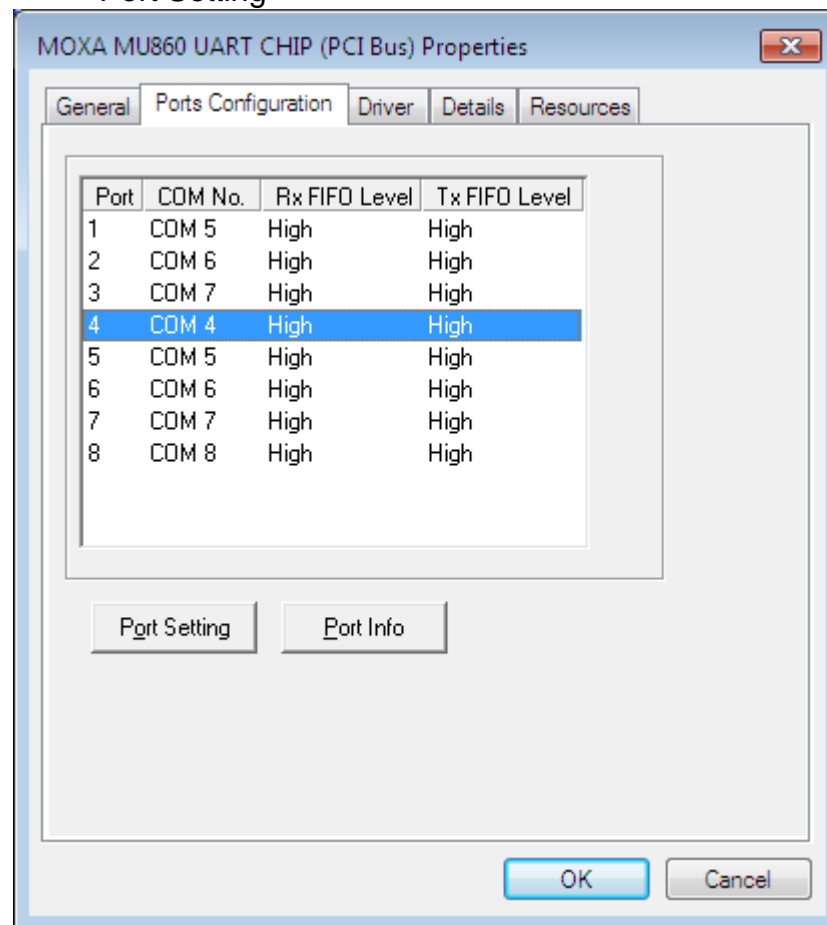
- 1.7. Change to “Ports Configuration” and select Port3 in the list and then click “Port Setting”



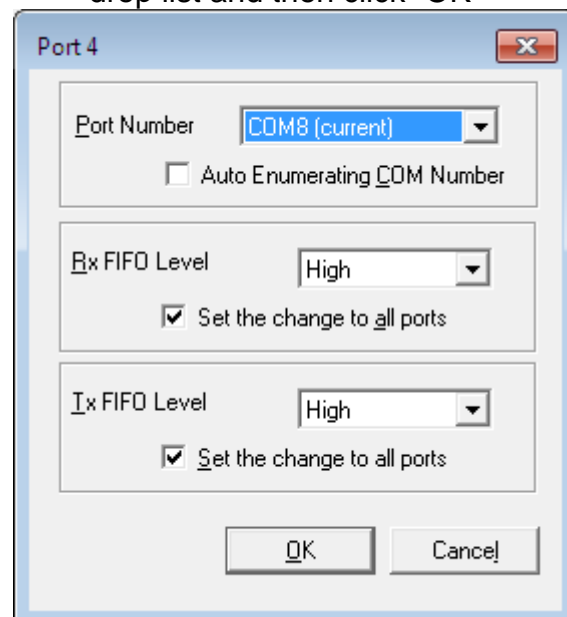
- 1.8. Un-check “Auto Enumerating COM Number” and Select “COM7” in the drop list and then click “OK”



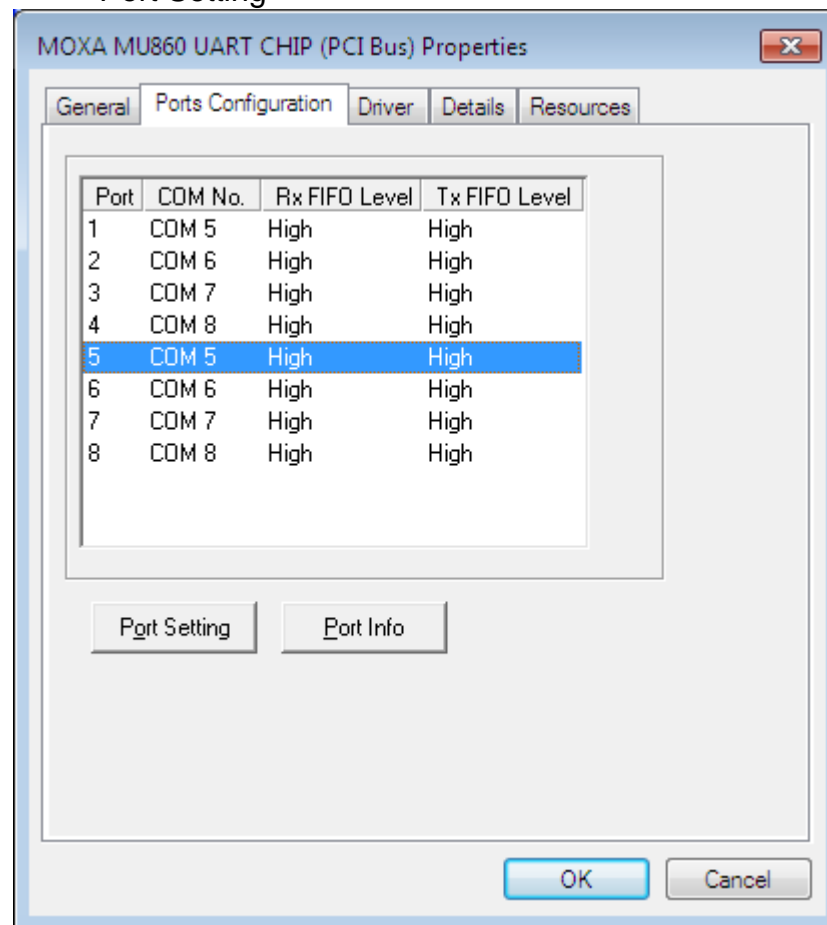
1.9. Change to “Ports Configuration” and select Port4 in the list and then click “Port Setting”



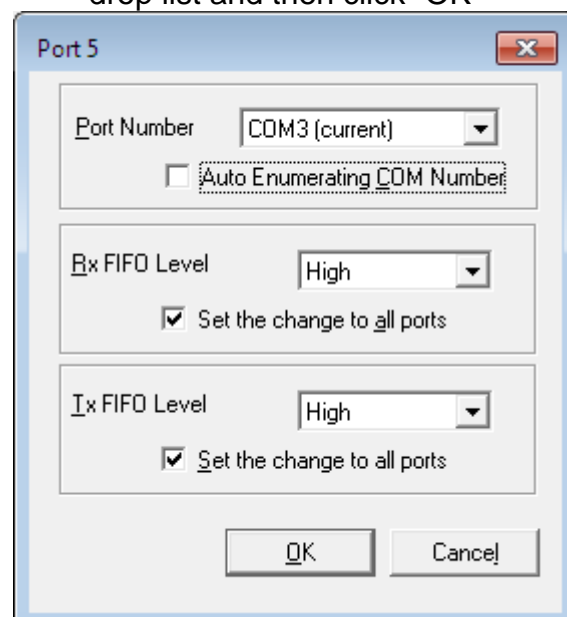
1.10. Un-check “Auto Enumerating COM Number” and Select “COM8” in the drop list and then click “OK”



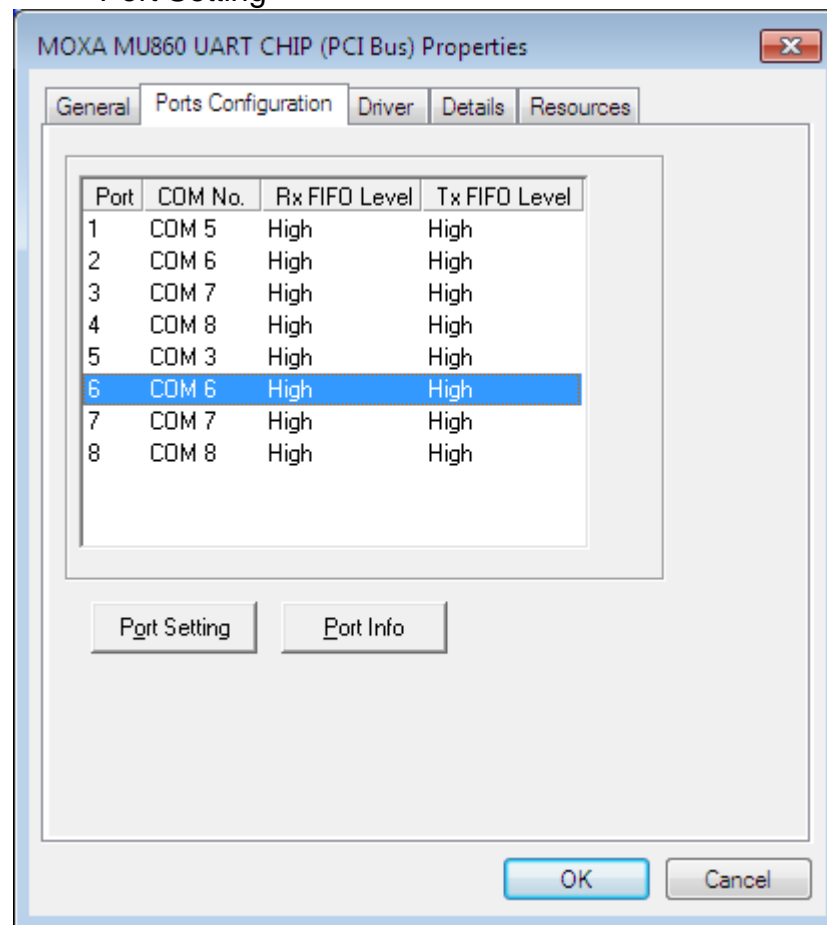
1.11. Change to “Ports Configuration” and select Port5 in the list and then click “Port Setting”



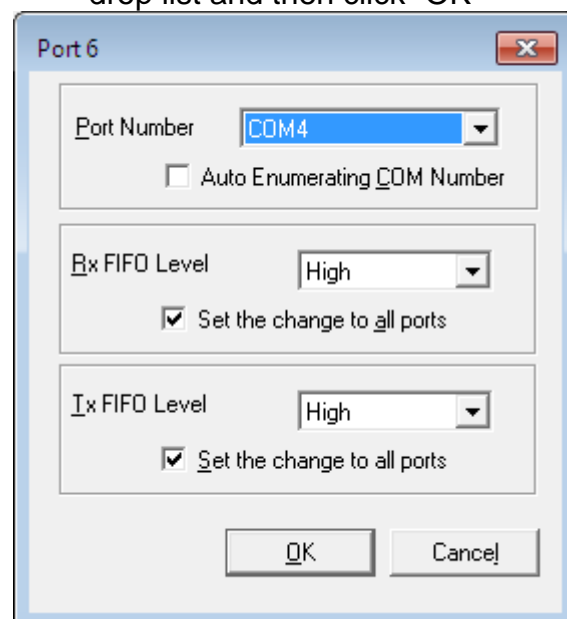
1.12. Un-check “Auto Enumerating COM Number” and Select “COM3” in the drop list and then click “OK”



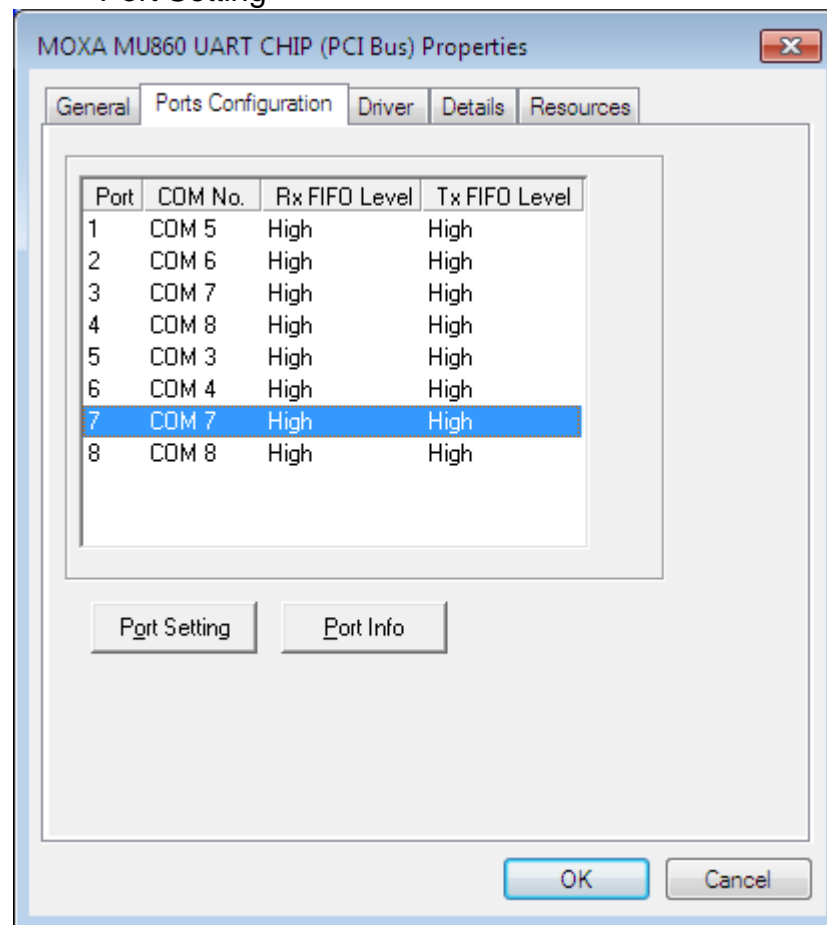
1.13. Change to “Ports Configuration” and select Port6 in the list and then click “Port Setting”



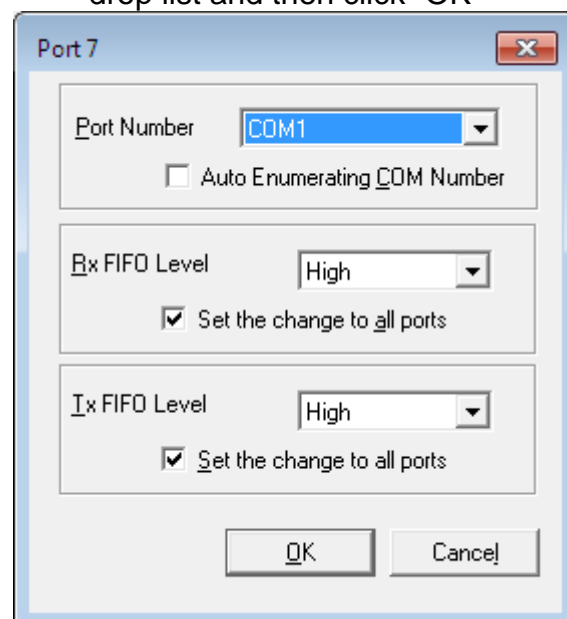
1.14. Un-check “Auto Enumerating COM Number” and Select “COM4” in the drop list and then click “OK”



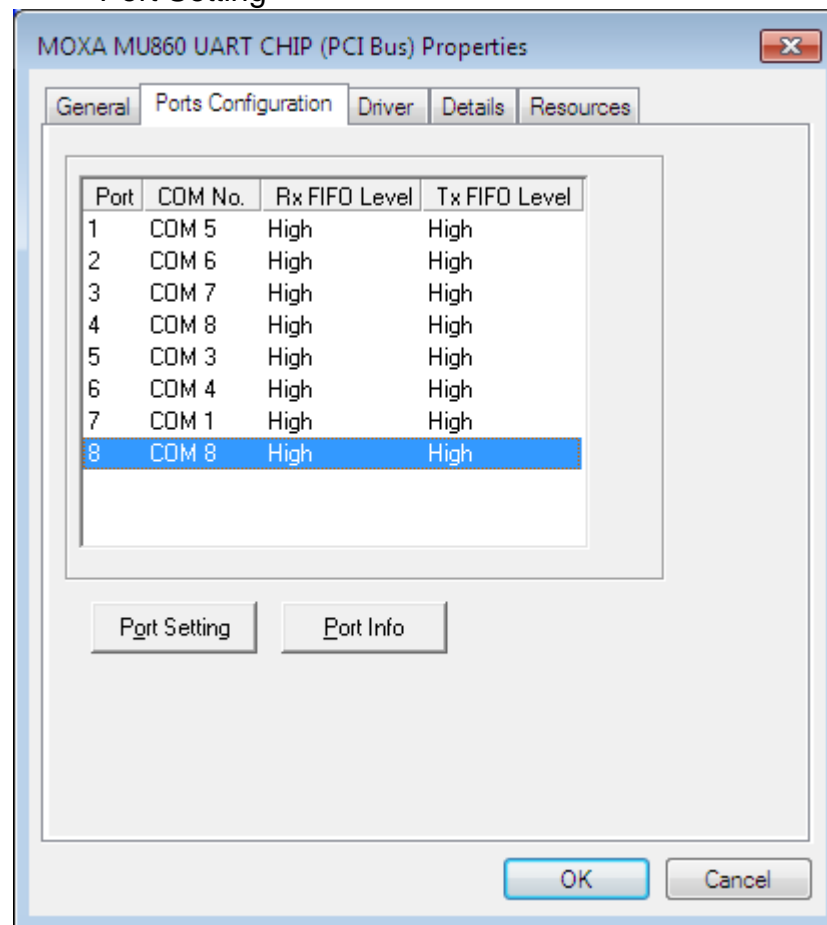
1.15. Change to “Ports Configuration” and select Port7 in the list and then click “Port Setting”



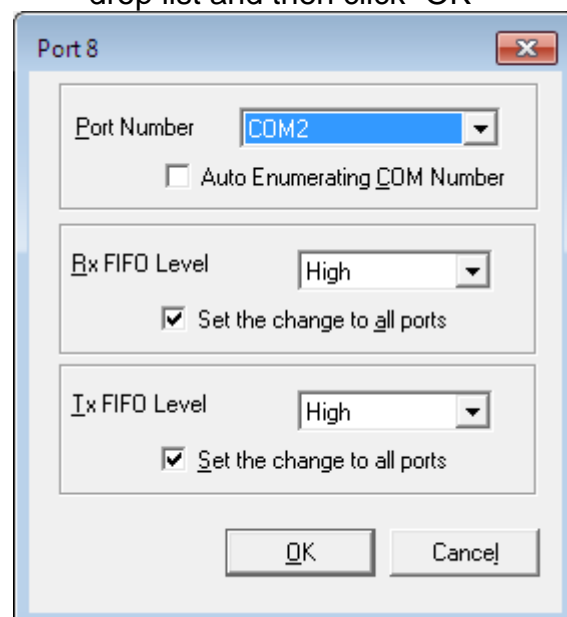
1.16. Un-check “Auto Enumerating COM Number” and Select “COM1” in the drop list and then click “OK”



1.17. Change to “Ports Configuration” and select Port8 in the list and then click “Port Setting”



1.18. Un-check “Auto Enumerating COM Number” and Select “COM2” in the drop list and then click “OK”



1.19. After configuration, the settings should be as follows:

