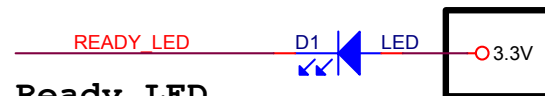
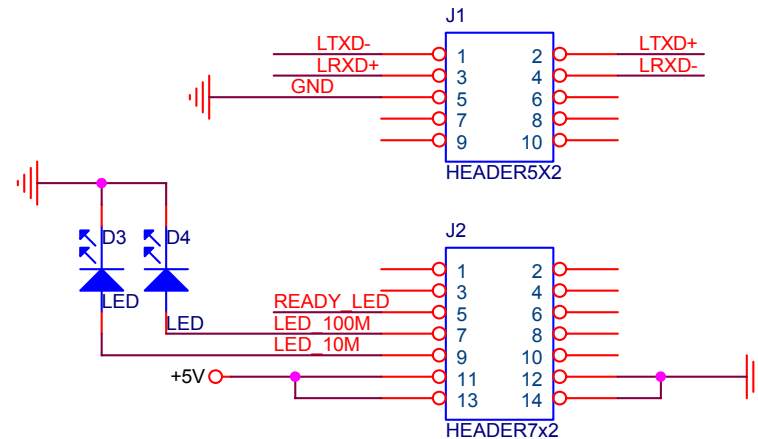


Absolute Max. Ratings		Min.	Max.	Unit
Vil	Input Low Voltage		1.08	V
Vih	Input High Voltage	2.1		V
Vol	Output Low Voltage		0.4	V
Voh	Output High Voltage	2.4		V

MOXA HWDC		
Title For NE-4120A		
Size A	Document Number DIO	Rev 1.0
Date: 星期四, 五月 20, 2004	Sheet 2 of 3	



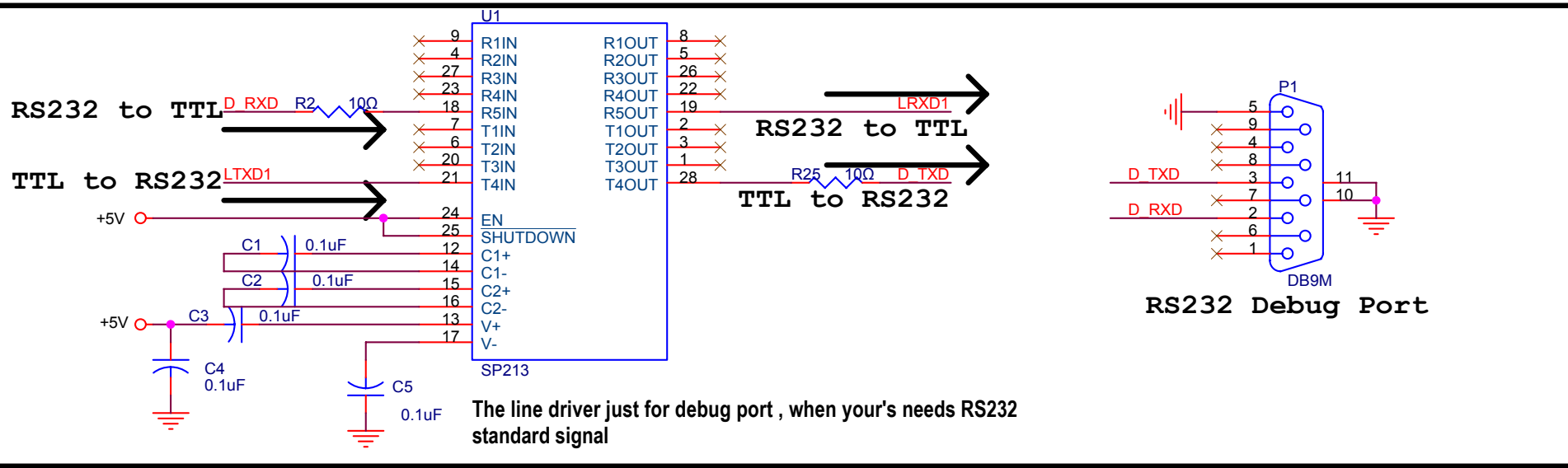
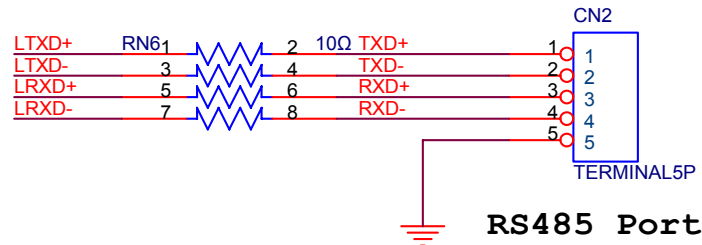
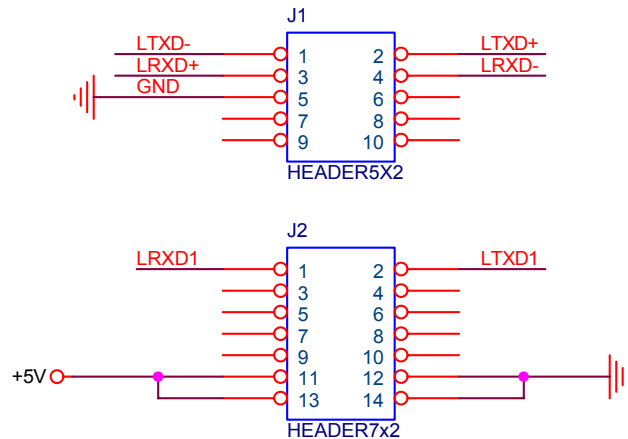
Ready LED

Note!! If the power is connected to 5V for Ready LED. The light-emitting diode will be a little luminous while it is turn off. We recommand connecting power to 3.3V to avoid this condition.



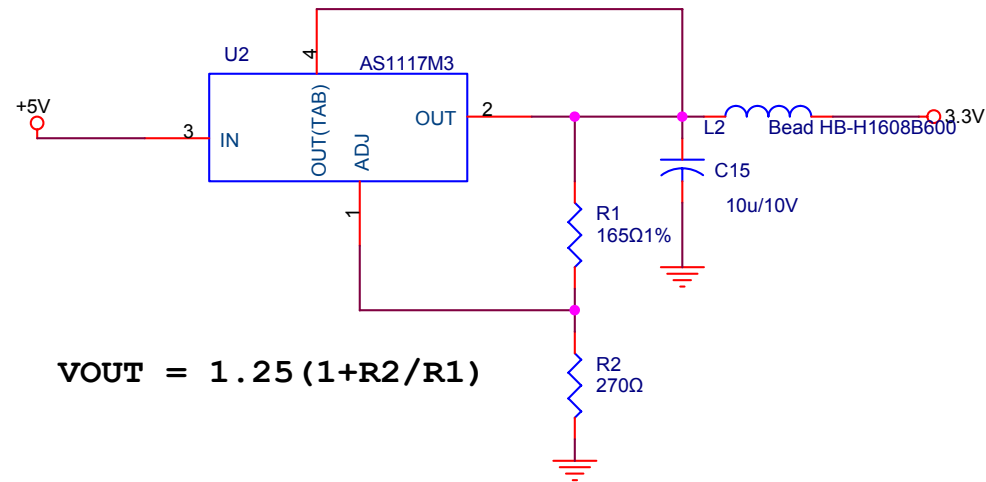
Power LED

MOXA HWDC		
Title		
For NE-4120A		
Size	Document Number	Rev
A	LED Display	1.0
Date:	星期四, 五月 20, 2004	Sheet 2 of 3



MOXA HWDC		
Title		
For NE-4120A		
Size	Document Number	Rev
A	Line Driver & Connector	1.0
Date:	星期四, 五月 20, 2004	Sheet 2 of 3

This linear regulator is only for Ready LED to avoid radiating little light while it should be turn off.



MOXA HWDC

Title

For NE-4120A

Size
A

Document Number

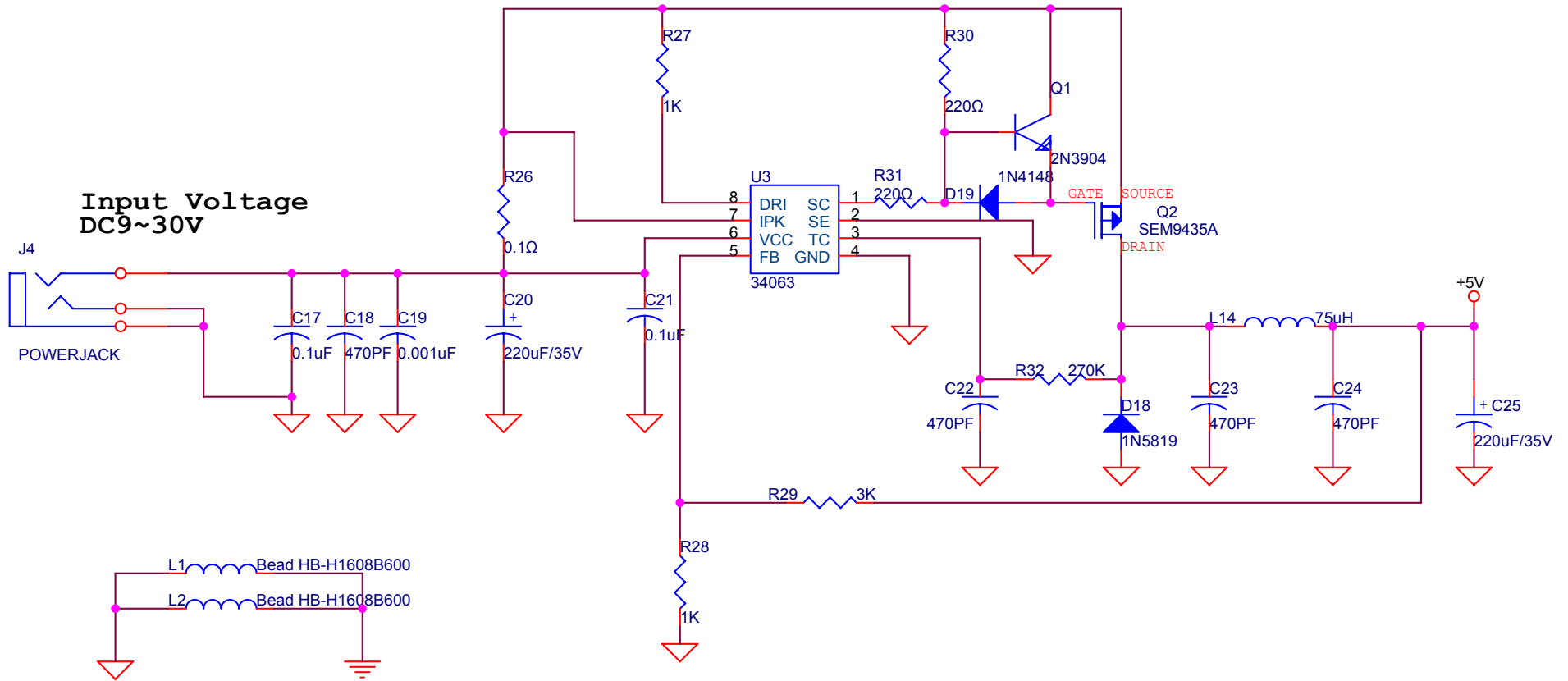
Linear Regulator

Rev
1.0

Date: 星期四, 五月 20, 2004

Sheet 2 of 3

The switching regulator is for NE-4110A/S system power



MOXA HWDC

Title

For NE-4120A

Size
A

Document Number

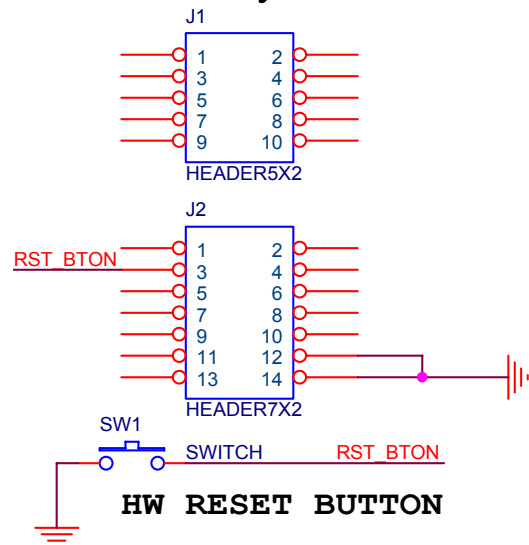
Switching Regulator

Rev
1.0

Date: 星期四, 五月 20, 2004

Sheet 2 of 3

While push this button, the NE-4120A/S terminates all operations immediately, and reset the system to the default value.



MOXA HWDC

Title

For NE-4120A

Size
A

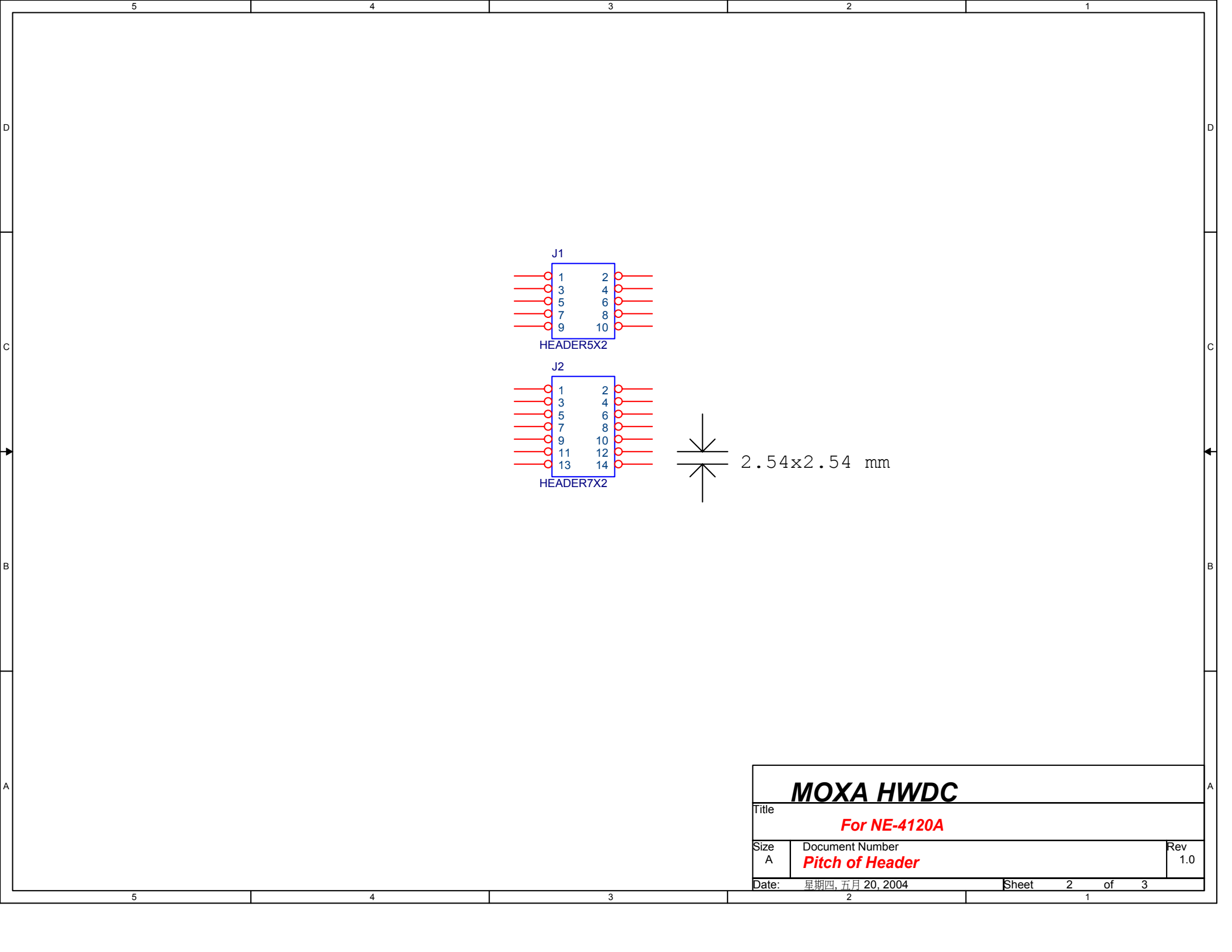
Document Number

Reset System

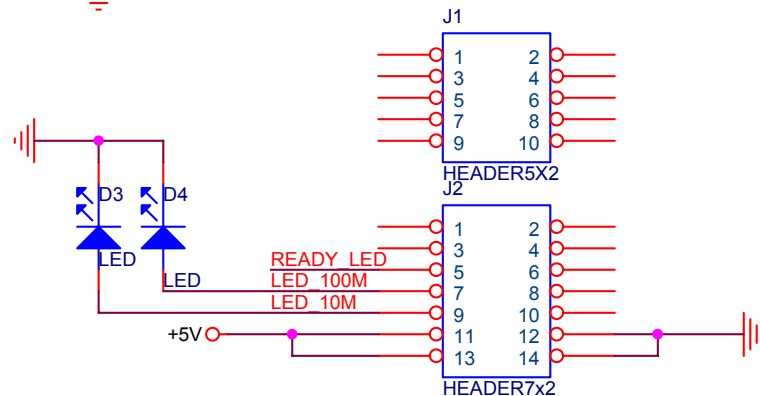
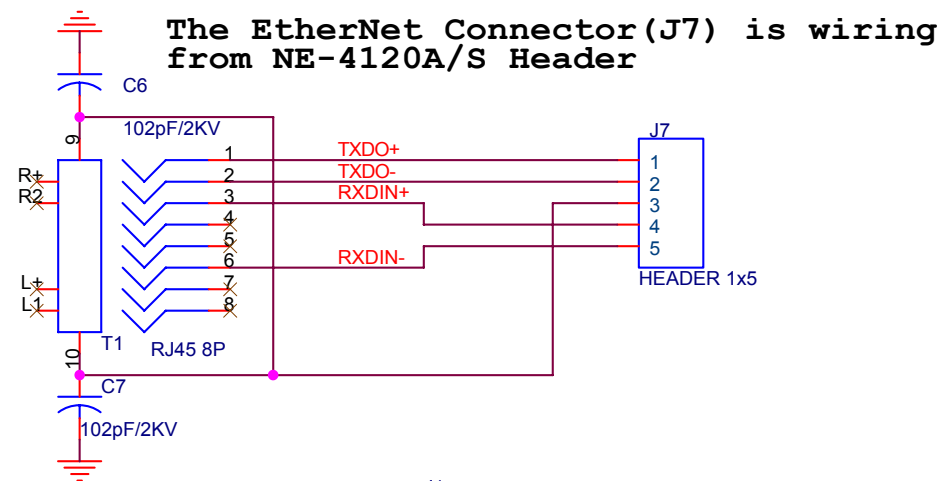
Rev
1.0

Date: 星期四, 五月 20, 2004

Sheet 2 of 3



MOXA HWDC		
Title		
For NE-4120A		
Size	Document Number	Rev
A	Pitch of Header	1.0
Date:	星期四, 五月 20, 2004	Sheet 2 of 3



MOXA HWDC

Title

For NE-4120A

Size
A

Document Number
EtherNet

Rev
1.0

Date: 星期四, 五月 20, 2004

Sheet 2 of 3