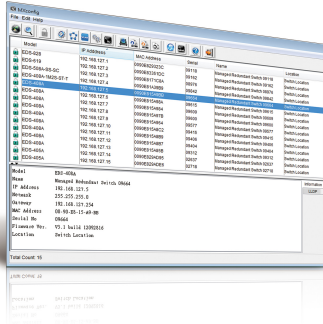


MXconfig Series

Industrial network configuration tool



Features and Benefits

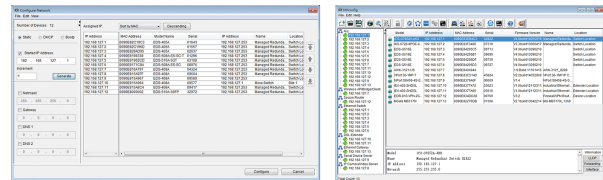
- Mass managed function configuration increases deployment efficiency and reduces setup time
- Mass configuration duplication reduces installation costs
- Link sequence detection eliminates manual setting errors
- Configuration overview and documentation for easy status review and management
- Three user privilege levels enhance security and management flexibility¹

Introduction

Moxa's MXconfig is a comprehensive Windows-based utility that is used to install, configure, and maintain multiple Moxa devices on industrial networks. This suite of useful tools helps users set the IP addresses of multiple devices with one click, configure the redundant protocols and VLAN settings, modify multiple network configurations of multiple Moxa devices, upload firmware to multiple devices, export or import configuration files, copy configuration settings across devices, easily link to web and Telnet consoles, and test device connectivity. MXconfig gives device installers and control engineers a powerful and easy way to mass configure devices, and it effectively reduces the setup and maintenance cost.

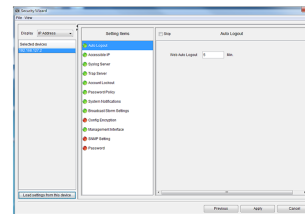
Device Discovery and Fast Group Configuration

- Easy broadcast search of the network for all supported Moxa managed Ethernet devices
- Mass network setting (such as IP addresses, gateway, and DNS) deployment reduces setup time
- Deployment of mass managed functions increases configuration efficiency
- Security wizard for convenient setup of security-related parameters
- Multiple grouping for easy classification¹
- User-friendly port selection panel provides physical port descriptions¹
- VLAN Quick-Add Panel speeds up setup time¹
- Deploy multiple devices with one click using CLI execution



Network Setting

Multiple Grouping



Security Wizard

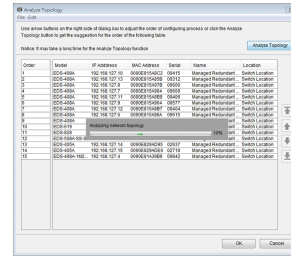
Fast Configuration Deployment

- Quick configuration: copies a specific setting to multiple devices and changes IP addresses with one click

1. This feature is only available in the Java-supported version of MXconfig.

Link Sequence Detection

- Link sequence detection eliminates manual configuration errors and avoids disconnections, especially when configuring redundancy protocols, VLAN settings, or firmware upgrades for a network in a daisy-chain topology (line topology).
- Link Sequence IP setting (LSIP) prioritizes devices and configures IP addresses by link sequence to enhance deployment efficiency, especially in a daisy-chain topology (line topology).



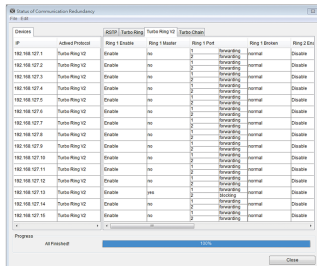
Analyze Topology

Unlock Devices and User Privileges

- Mass device unlocking and password file export for quick unlocks.
- Three user privilege levels to enhance management flexibility and security: Admin, Supervisor, and Operator.²

Configuration Overview and Documentation

- Useful mass status overview and configuration check for each managed function.
- Generate reports on each managed function for multiple devices in the network.²
- Export multiple configuration files with flexible filenames and import multiple configuration files to multiple devices.
- Export device list for easy backup, and import device list for quick searching²



Status Overview

	A	B	C	D	E	F	G	H	I	J	K	L	M
	IP	Activated Protocol	Ring 1 Enable	Ring 1 Master	Ring 1 Port	Ring 1 Broken	Ring 2 Enable	Ring 2 Master	Ring 2 Port	Ring 2 Broken	Coupling Enable	Coupling Mode	Coupling Port
1	192.168.127.1	Turbo Ring V2	Enable	no	1 forwarding 2 forwarding	normal	Disable	no	1 notRedundant 1 notRedundant	N/A	Disable	Dual Homing	1 notRedundant 1 notRedundant
2	192.168.127.2	Turbo Ring V2	Enable	no	1 forwarding 2 forwarding	normal	Disable	no	1 notRedundant 1 notRedundant	N/A	Disable	Dual Homing	1 notRedundant 1 notRedundant
3	192.168.127.3	Turbo Ring V2	Enable	no	1 forwarding 2 forwarding	normal	Disable	no	1 notRedundant 1 notRedundant	N/A	Disable	Dual Homing	1 notRedundant 1 notRedundant
4	192.168.127.4	Turbo Ring V2	Enable	no	1 forwarding 2 forwarding	normal	Disable	no	1 notRedundant 1 notRedundant	N/A	Disable	Dual Homing	1 notRedundant 1 notRedundant
5	192.168.127.5	Turbo Ring V2	Enable	no	1 forwarding 2 forwarding	normal	Disable	no	1 notRedundant 1 notRedundant	N/A	Disable	Dual Homing	1 notRedundant 1 notRedundant
6	192.168.127.6	Turbo Ring V2	Enable	no	1 forwarding 2 forwarding	normal	Disable	no	1 notRedundant 1 notRedundant	N/A	Disable	Dual Homing	1 notRedundant 1 notRedundant
7	192.168.127.7	Turbo Ring V2	Enable	no	1 forwarding 2 forwarding	normal	Disable	no	1 notRedundant 1 notRedundant	N/A	Disable	Dual Homing	1 notRedundant 1 notRedundant
8	192.168.127.8	Turbo Ring V2	Enable	no	1 forwarding 2 forwarding	normal	Disable	no	1 notRedundant 1 notRedundant	N/A	Disable	Dual Homing	1 notRedundant 1 notRedundant
9	192.168.127.9	Turbo Ring V2	Enable	no	1 forwarding 2 forwarding	normal	Disable	no	1 notRedundant 1 notRedundant	N/A	Disable	Dual Homing	1 notRedundant 1 notRedundant
10	192.168.127.10	Turbo Ring V2	Enable	yes	1 forwarding 2 blocks	normal	Disable	no	1 notRedundant 1 notRedundant	N/A	Disable	Dual Homing	1 notRedundant 1 notRedundant
11													
12													

File Export

Specifications

Hardware Requirements

RAM	2 GB
Hardware Disk Space	10 GB
OS	Windows 7 (32/64-bit) Windows 10 (32/64-bit) Windows 11 (32/64-bit) Windows Server 2016 (32/64-bit) Windows Server 2019 (32/64-bit)
CPU	2 GHz or faster dual-core CPU

² This feature is only available in the Java-supported version of MXconfig.

Supported Devices

AWK Products	<p>MXconfig Java Version:</p> <ul style="list-style-type: none">AWK-1121 Series (v1.4 or higher)AWK-1127 Series (v1.4 or higher)AWK-1131A Series (v1.11 or higher)AWK-1137C Series (v1.3 or higher)AWK-3121 Series (v1.10 or higher)AWK-3121-SSC-RTG Series (v1.4 or higher)AWK-3121-M12-RTG Series (v1.4 or higher)AWK-3131 Series (v1.2 or higher)AWK-3131-M12-RCC Series (v1.0 or higher)AWK-3131A Series (v1.3 or higher)AWK-3131A-RTG Series (v1.8 or higher)AWK-4121 Series (v1.10 or higher)AWK-4131 Series (v1.2 or higher)AWK-4131A Series (v1.3 or higher)AWK-5222 Series (v1.7 or higher)AWK-5232 Series (v1.3 or higher)AWK-6222 Series (v1.7 or higher)AWK-6232 Series (v1.3 or higher) <p>MXconfig Non-Java Version:</p> <ul style="list-style-type: none">AWK-1151C Series (v2.0 or higher)AWK-1161A Series (v1.0 or higher)AWK-1161C Series (v1.0 or higher)AWK-1165A Series (v1.0 or higher)AWK-1165C Series (v1.0 or higher)AWK-3252A Series (v2.0 or higher)AWK-4252A Series (v2.0 or higher)
EDF Products	<p>MXconfig Non-Java Version:</p> <ul style="list-style-type: none">EDF-G1002-BP Series (v3.10 or higher)
EDR Products	<p>MXconfig Java Version:</p> <ul style="list-style-type: none">EDR-810 Series (v3.2 or higher)EDR-G902 Series (v4.2 or higher)EDR-G903 Series (v4.2 or higher) <p>MXconfig Non-Java Version:</p> <ul style="list-style-type: none">EDR-810 Series (v3.2 or higher)EDR-8010 Series (v3.1 or higher)EDR-G902 Series (v4.2 or higher)EDR-G903 Series (v4.2 or higher)EDR-G9004 Series (v3.10 or higher)EDR-G9010 Series (v1.0 or higher)
EDS Products	<p>MXconfig Java Version:</p> <ul style="list-style-type: none">EDS-405A/408A Series (v3.1 or higher)EDS-405A/408A-EIP Series (v3.1 or higher)EDS-405A/408A-PN Series (v3.1 or higher)EDS-405A-PTP Series (v3.3 or higher)EDS-505A/508A/516A Series (v3.1 or higher)EDS-510A Series (v3.1 or higher)EDS-518A Series (v3.1 or higher)EDS-510E/518E Series (v4.0 or higher)EDS-528E Series (v5.0 or higher)EDS-G508E/G512E/G516E Series (v4.0 or higher)EDS-G512E-8PoE Series (v4.0 or higher)EDS-608/611/616/619 Series (v3.1 or higher)EDS-728 Series (v3.1 or higher)EDS-828 Series (v3.1 or higher)EDS-G509 Series (v3.1 or higher)EDS-P510 Series (v3.1 or higher)EDS-P510A Series (v3.1 or higher)EDS-P506E Series (v5.5 or higher) <p>MXconfig Non-Java Version:</p> <ul style="list-style-type: none">EDS-405A/408A Series (v3.1 or higher)EDS-405A/408A-EIP Series (v3.1 or higher)EDS-405A/408A-PN Series (v3.1 or higher)EDS-405A-PTP Series (v3.3 or higher)EDS-4008 Series (v2.2 or higher)EDS-4009 Series (v2.2 or higher)

	<p>EDS-4012 Series (v2.2 or higher) EDS-4014 Series (v2.2 or higher) EDS-G4008 Series (v2.2 or higher) EDS-G4012 Series (v2.2 or higher) EDS-G4014 Series (v2.2 or higher) EDS-505A/508A/516A Series (v3.1 or higher) EDS-510A Series (v3.1 or higher) EDS-518A Series (v3.1 or higher) EDS-510E/518E Series (v4.0 or higher) EDS-528E Series (v5.0 or higher) EDS-G508E/G512E/G516E Series (v4.0 or higher) EDS-G512E-8PoE Series (v4.0 or higher) EDS-608/611/616/619 Series (v3.1 or higher) EDS-728 Series (v3.1 or higher) EDS-828 Series (v3.1 or higher) EDS-G509 Series (v3.1 or higher) EDS-P510 Series (v3.1 or higher) EDS-P510A Series (v3.1 or higher) EDS-P506E Series (v5.5 or higher)</p>
ICS Products	<p>MXconfig Java Version: ICS-G7526/G7528 Series (v3.1 or higher) ICS-G7826/G7828 Series (v3.1 or higher) ICS-G7748/G7750/G7752 Series (v3.1 or higher) ICS-G7848/G7850/G7852 Series (v3.1 or higher) ICS-G7526A/G7528A Series (v4.0 or higher) ICS-G7826A/G7828A Series (v4.0 or higher) ICS-G7748A/G7750A/G7752A Series (v4.0 or higher) ICS-G7848A/G7850A/G7852A Series (v4.0 or higher)</p> <p>MXconfig Non-Java Version: ICS-G7826/G7828 Series (v3.1 or higher) ICS-G7748/G7750/G7752 Series (v3.1 or higher) ICS-G7848/G7850/G7852 Series (v3.1 or higher) ICS-G7526A/G7528A Series (v4.0 or higher) ICS-G7826A/G7828A Series (v4.0 or higher) ICS-G7748A/G7750A/G7752A Series (v4.0 or higher) ICS-G7848A/G7850A/G7852A Series (v4.0 or higher)</p>
IEX Products	<p>MXconfig Java Version: IEX-402 Series (v1.0 or higher) IEX-408E Series (v4.0 or higher)</p> <p>MXconfig Non-Java Version: IEX-402 Series (v1.0 or higher) IEX-408E Series (v4.0 or higher)</p>
IKS Products	<p>MXconfig Java Version: IKS-G6524 Series (v3.1 or higher) IKS-G6824 Series (v3.1 or higher) IKS-6726A/6728A Series (v4.0 or higher) IKS-G6524A Series (v4.0 or higher) IKS-G6824A Series (v4.0 or higher) IKS-6728A-8PoE Series (v4.0 or higher)</p> <p>MXconfig Non-Java Version: IKS-G6524 Series (v3.1 or higher) IKS-G6824 Series (v3.1 or higher) IKS-6726A/6728A Series (v4.0 or higher) IKS-G6524A Series (v4.0 or higher) IKS-G6824A Series (v4.0 or higher) IKS-6728A-8PoE Series (v4.0 or higher)</p>
ioLogik Products	<p>MXconfig Java Version: ioLogik E1200 Series (v3.2 or higher)</p>
ioThinX Products	<p>MXconfig Java Version: ioThinX 4510 Series (v1.3 or higher)</p>
MDS Products	<p>MXconfig Java Version: MDS-G4012 Series (v1.1 or higher) MDS-G4020 Series (v1.1 or higher) MDS-G4028 Series (v1.1 or higher)</p>

	<p>MXconfig Non-Java Version: MDS-G4012 Series (v1.1 or higher) MDS-G4020 Series (v1.1 or higher) MDS-G4028 Series (v1.1 or higher) MDS-G4012-L3 Series (v2.0 or higher) MDS-G4020-L3 Series (v2.0 or higher) MDS-G4028-L3 Series (v2.0 or higher)</p>
MGate Products	<p>MXconfig Java Version: MGate MB3170/MB3270 Series (v4.2 or higher) MGate MB3180 Series (v2.2 or higher) MGate MB3280 Series (v4.1 or higher) MGate MB3480 Series (v3.2 or higher) MGate MB3660 Series (v2.5 or higher) MGate EIP3170 Series (v2.0 or higher) MGate EIP3270 Series (v2.0 or higher) MGate 5101-PBM-MN Series (v2.2 or higher) MGate 5102-PBM-PN Series (v2.3 or higher) MGate 5103 Series (v2.2 or higher) MGate 5105-MB-EIP Series (v4.3 or higher) MGate 5108 Series (v2.4 or higher) MGate 5208 Series (v2.4 or higher) MGate 5109 Series (v2.3 or higher) MGate 5111 Series (v1.3 or higher) MGate 5114 Series (v1.3 or higher) MGate 5118 Series (v2.2 or higher) MGate 5217 Series (v1.0 or higher)</p>
MRX Products	<p>MXconfig Non-Java Version: MRX-G4064 Series (v1.0 or higher) MRX-Q4064 Series (v1.0 or higher)</p>
NAT Products	<p>MXconfig Non-Java Version: NAT-102 Series (v3.15 or higher)</p>
NPort Products	<p>MXconfig Java Version: NPort S8000 Series (v1.3 or higher) NPort S9000 Series (v1.0 or higher) NPort 5110 Series (v3.8 or higher) NPort 5130/5150 Series (v3.8 or higher) NPort 5000AI-M12 Series (v1.4 or higher) NPort 5200 Series (v2.10 or higher) NPort 5400 Series (v3.13 or higher) NPort 5600 Series (v3.9 or higher) NPort 5100A Series (v1.5 or higher) NPort 5200A Series (v1.5 or higher) NPort 5610-8-DT/5610-8-DT-J/5650-8-DT/5650I-8-DT/5650-8-DT-J Series (v2.6 or higher) NPort 5610-8-DTL/5650-8-DTL/5650I-8-DTL Series (v1.5 or higher) NPort IA5000 Series (v1.6 or higher) NPort IA5150A/IA5150AI/IA5250A/IA5250AI Series (v1.4 or higher) NPort IA5450A/IA5450AI Series (v1.6 or higher) NPort 6000 Series (v1.21 or higher)</p>
OnCell Products	<p>MXconfig Non-Java Version: OnCell G4302 Series (v2.5 or higher)</p>
PT Products	<p>MXconfig Java Version: PT-7528 Series (v3.1 or higher) PT-7710 Series (v3.1 or higher) PT-7728 Series (v3.1 or higher) PT-7828/7828-PTP Series (v3.1 or higher) PT-G7509 Series (v3.1 or higher) PT-508/510 Series (v3.1 or higher) PT-G7728 Series (v5.4 or higher) PT-G7828 Series (v5.4 or higher)</p> <p>MXconfig Non-Java Version: PT-7528 Series (v3.1 or higher) PT-7710 Series (v3.1 or higher) PT-7728 Series (v3.1 or higher) PT-7828/7828-PTP Series (v3.1 or higher)</p>

	PT-G7509 Series (v3.1 or higher) PT-508/510 Series (v3.1 or higher) PT-G510 Series (v6.4 or higher) PT-G7728 Series (v5.4 or higher) PT-G7828 Series (v5.4 or higher)
RKS Products	MXconfig Non-Java Version: RKS-G4028 Series (v3.0 or higher)
SDS Products	MXconfig Non-Java Version: SDS-3006 Series (v3.0 or higher) SDS-3008 Series (v2.1 or higher) SDS-3010 Series (v3.0 or higher) SDS-3016 Series (v2.1 or higher) SDS-G3006 Series (v3.0 or higher) SDS-G3008 Series (v3.0 or higher) SDS-G3010 Series (v3.0 or higher) SDS-G3016 Series (v3.0 or higher)
TAP Products	MXconfig Java Version: TAP-213 Series (v1.2 or higher) TAP-323 Series (v1.8 or higher)
TN Products	MXconfig Java Version: TN-4500A Series (v3.5 or higher) TN-5508/5510 Series (v3.1 or higher) TN-5516/5518 Series (v3.1 or higher) TN-5900 Series (v1.2 or higher) MXconfig Non-Java Version: TN-4500A Series (v3.5 or higher) TN-4500B Series (v1.0 or higher) TN-4900 Series (v1.0 or higher) TN-5508/5510 Series (v3.1 or higher) TN-5516/5518 Series (v3.1 or higher) TN-5900 Series (v1.2 or higher)
VPort Products	MXconfig Java Version: VPort 26A-1MP Series (v1.2 or higher) VPort 36-1MP Series (v1.1 or higher) VPort P06-1MP-M12 Series (v2.2 or higher)
WAC Products	MXconfig Java Version: WAC-1001 Series (v2.1 or higher) WAC-2004 Series (v1.6 or higher)

© Moxa Inc. All rights reserved. Updated Jan 15, 2025.

This document and any portion thereof may not be reproduced or used in any manner whatsoever without the express written permission of Moxa Inc. Product specifications subject to change without notice. Visit our website for the most up-to-date product information.